



Seely Road, SW17

£725,000

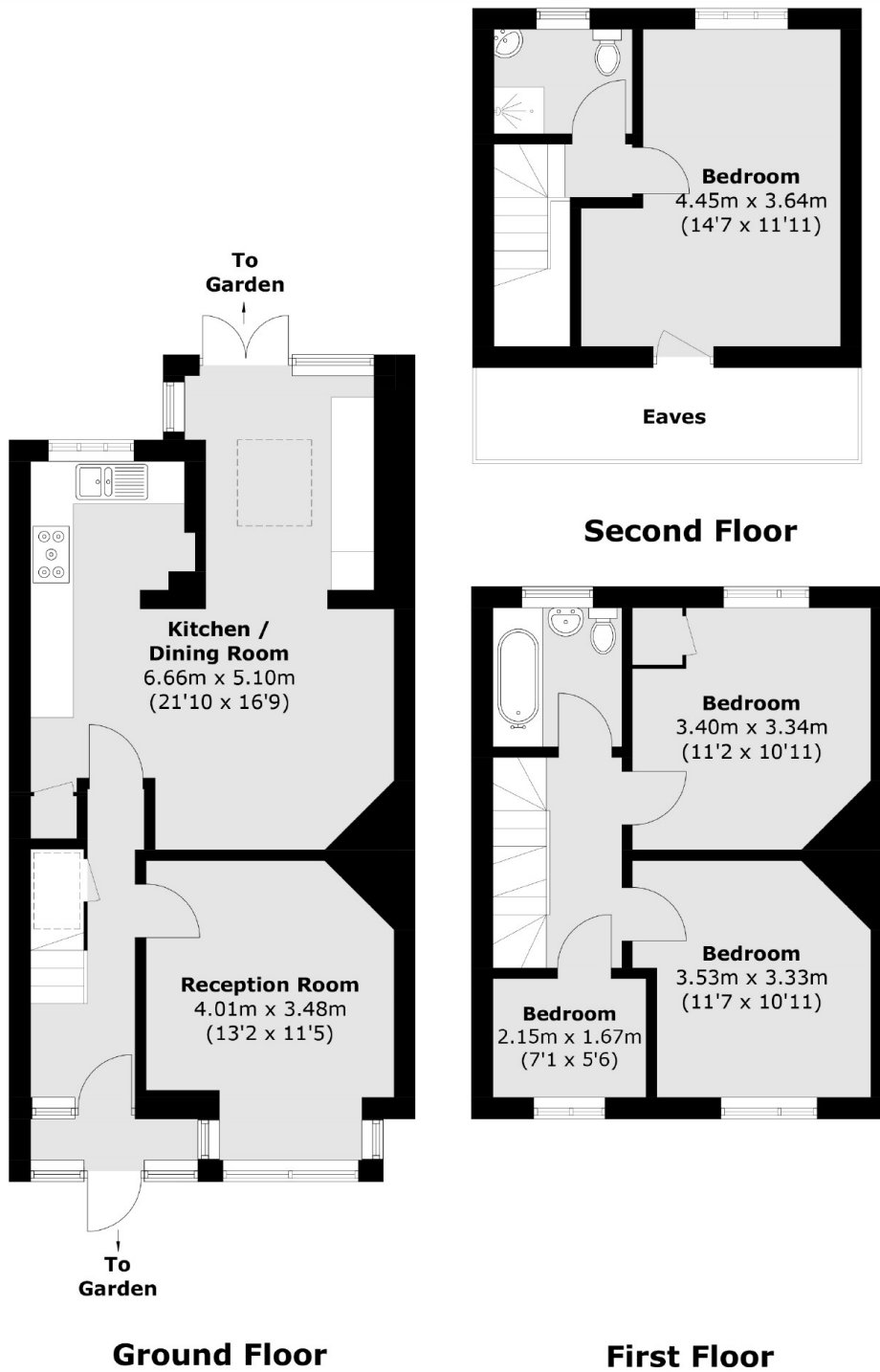
A generous and lovingly maintained four bedroom home set on the highly desirable ABC roads. Accommodation includes a spacious front reception room, a large eat-in kitchen with a comfortable dining area, four bedrooms and two bathrooms.

Seely Road is at the heart of the ABC roads in central Tooting, located very close to the many shops, bars and restaurants of Tooting High Street and sits on the doorstep of Furzedown Village with Tooting Railway & Broadway Underground stations nearby.

Features

- Four Bedrooms
- Further Potential to Extend (STPP)
- Large Garden
- Front Reception Room
- Eat-In Kitchen

Seely Road, London, SW17



Total area (approx.): 110.8 sq. m (1,192.7 sq. ft)
(Excluding Eaves)