



Southercroft Road, SW16

£530,000

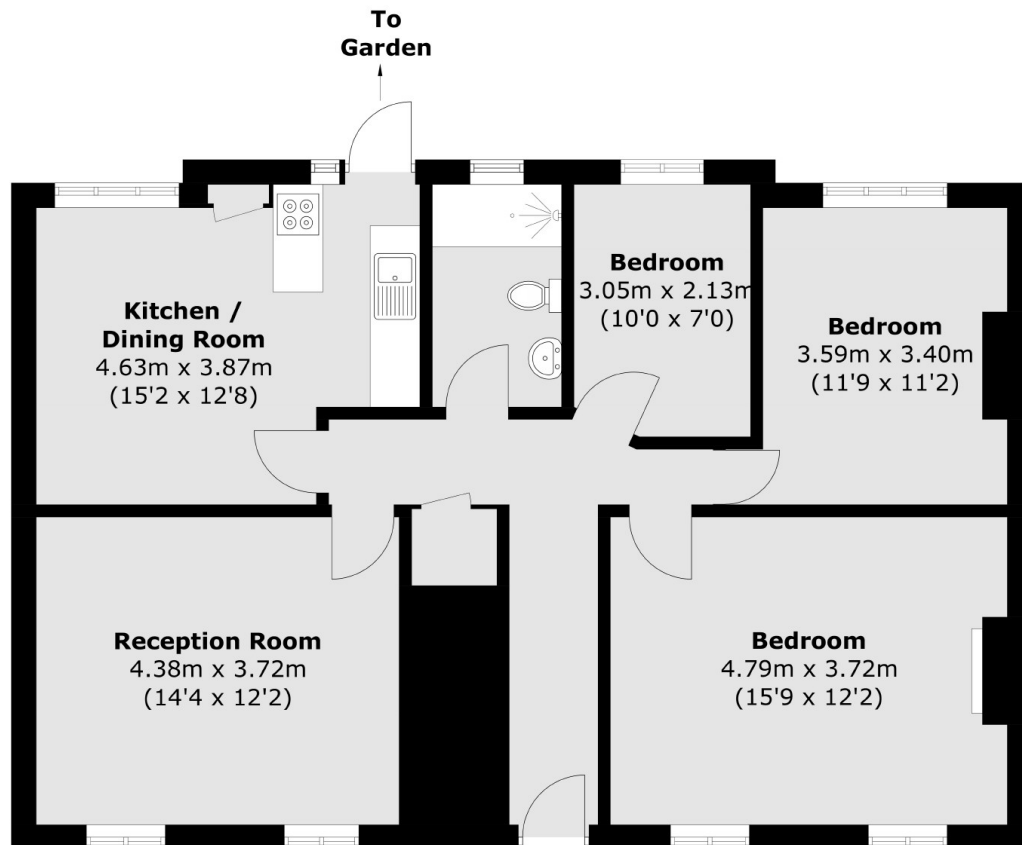
A spacious and well arranged ground floor apartment with a footprint that extends to just shy of 1000 sqft comprising three double bedrooms, a generous front reception room, a large eat-in stylish kitchen with direct access onto a south facing garden and a three piece family bathroom.

Southercroft Road is conveniently located for the many cafes, restaurants and bars of Mitcham Road and Furzedown Village and is beautifully complimented with a vast array of transport links with Tooting Overground and Tooting Broadway Underground Stations a short walk away.

Features

- Three Double Bedrooms
- South Facing Garden
- Separate Reception Room
- Stylish Kitchen
- Own Front Door
- Residential Location

Southercroft Road, London, SW16



Total area (approx.): 89.5 sq. m (963.4 sq. ft)

Dexters

Tooting
48 Tooting High Street
London
SW17 0RG
Sales
020 8545 8582

Energy Rating: - We aim to make our particulars both accurate and reliable. However they are not guaranteed; nor do they form part of an offer or contract. If you require clarification on any points then please contact us, especially if you're traveling some distance to view. Please note that appliances and heating systems have not been tested and therefore no warranties can be given as to their good working order.

 **RICS** | Regulated
Estate Agent
and Letting Agent

dexters.co.uk