



Lucien Road, SW17

£1,175,000

An impressive and rarely available six bedroom mid terrace freehold home extending to over 2000 sqft with a generous plot and an abundance of scope for extending and alterations (STPP) as an existing or multiple dwelling.

Lucien Road is one of the most desirable roads in Tooting Bec with excellent proximity to the many shops, bars and restaurants Tooting and Balham town centres have to offer. The vast transport links of Tooting Bec Underground Station and green open spaces of Tooting Bec Common are also within walking distance.

Features

- Six Double Bedrooms
- Chain Free
- Cellar
- Conversion Potential (STPP)
- Tooting Bec
- Large Garden



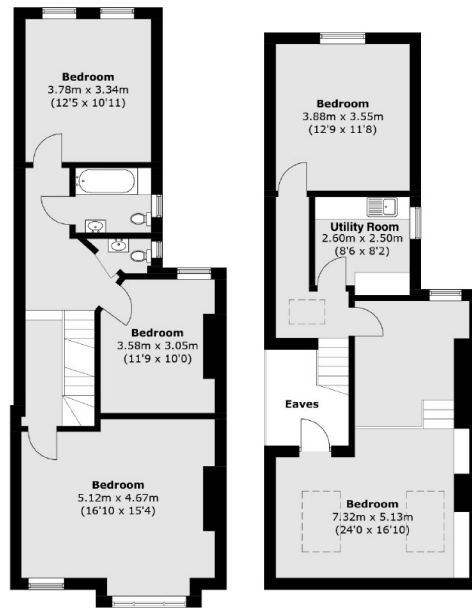
Lucien Road, SW17

With a handsome exterior, the property retains a generous footprint over three floors and benefits from a cellar. The ground floor is wonderfully balanced with a spacious front reception room, an eat-in kitchen and a rear bedroom leading to a large garden.

Over the first and top floors, there are five double bedrooms and two bathrooms with a spacious and practical utility room over the top floor.

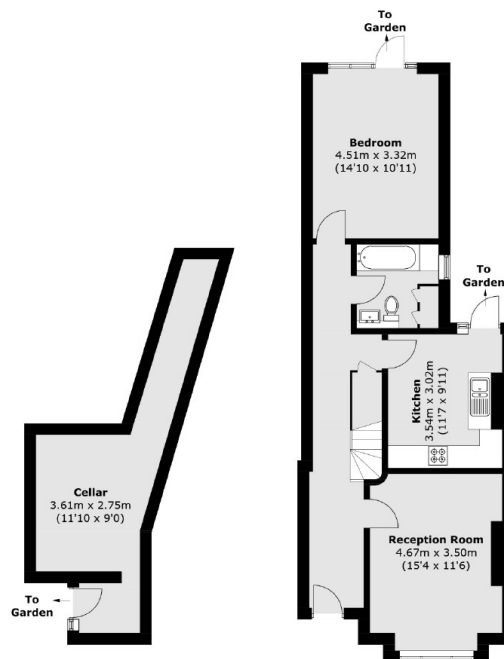


Lucien Road, London, SW17



First Floor

Second Floor



Lower Ground Floor

Ground Floor

Total area (approx.): 201.3 sq. m (2,166.7 sq. ft)
(Excluding Eaves)