



Garratt Lane, SW17

£2,850 Per calendar month

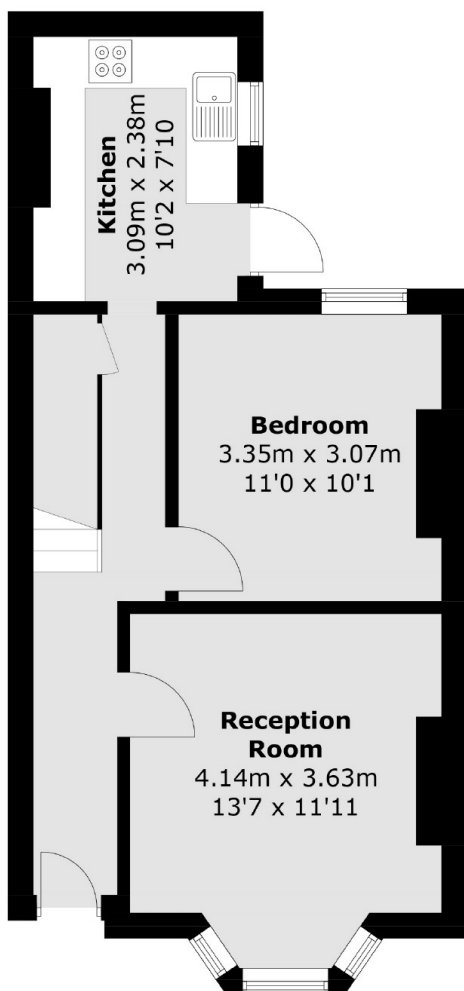
A well presented three double bedroom house, reception room, kitchen, bathroom and a large private garden. Suitable for three professional sharers.

Garratt Lane is perfectly positioned for the bustling streets, shops, bars and restaurants of Tooting Broadway with easy access to London's oldest market and the many bus and transport links of Tooting Broadway Tube Station.

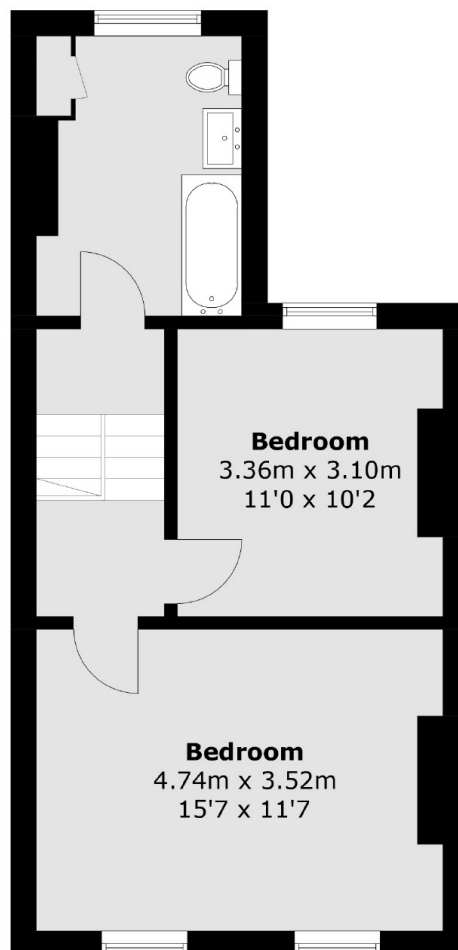
Features

Three Bedrooms
Reception Room
Private Garden
Ideal Location
Great Transport Links

Garratt Lane, London, SW17



Ground Floor



First Floor

Total area (approx.): 83.5 sq. m (898.8 sq. ft)