



Woodbury Street, SW17

£495,000

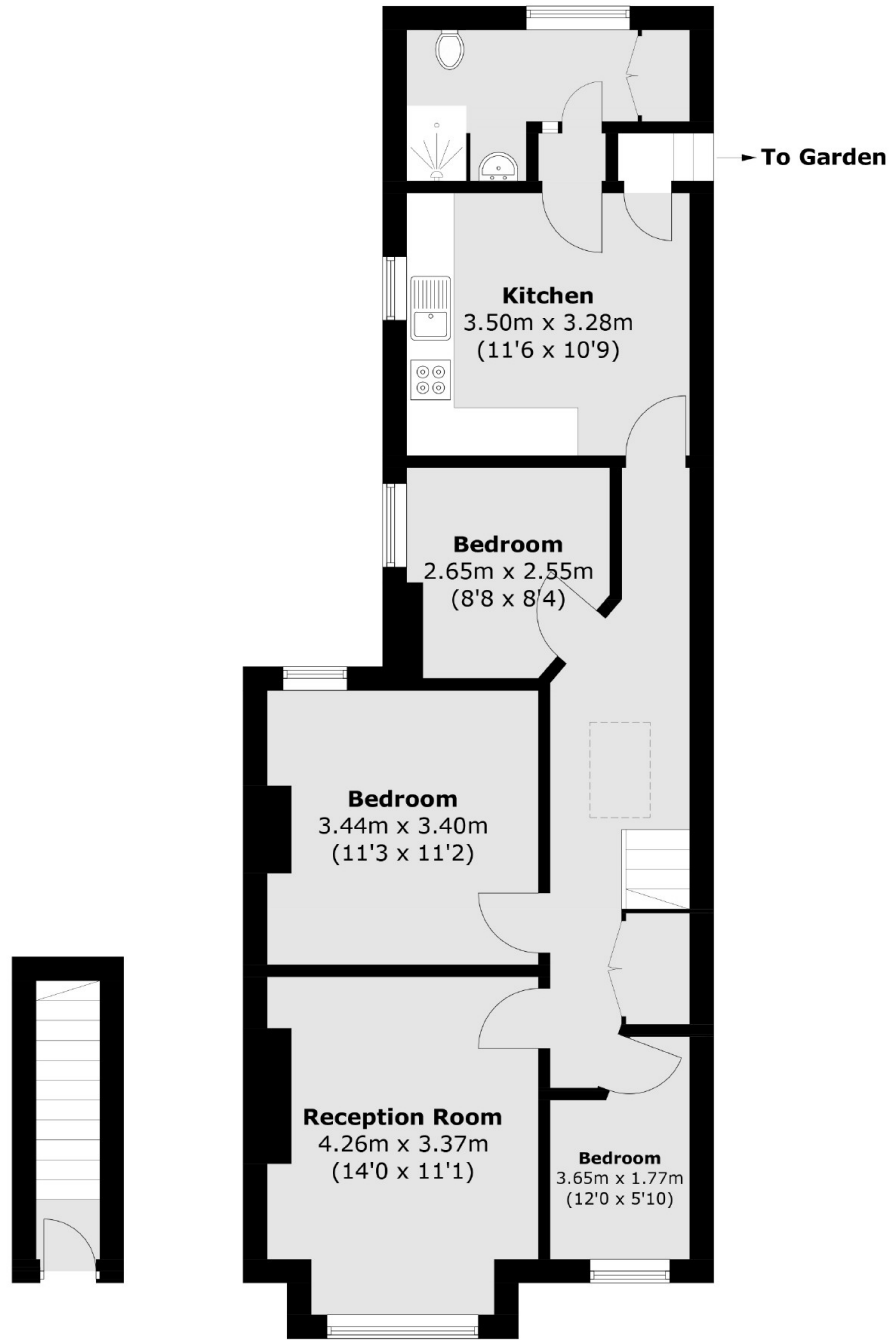
An impressive three bedroom maisonette set over the first floor of this handsome Victorian building. Accommodation extends to 763 sqft and comprises a large eat-in kitchen, front reception, a private garden, three bedrooms and a three piece family bathroom.

Woodbury Street is enviably located for the many shops, bars and restaurants of Central Tooting with Tooting Market only a short stroll away. The many transport links and access points for the City can be found via Tooting Broadway Underground and Tooting Railway stations.

Features

- Three Bedrooms
- Scope for Extending (STPP)
- Private Garden
- Healthy Lease
- Chain Free
- Desirable Location

Woodbury Street, London, SW17



Ground Floor

First Floor

Total area (approx.): 70.9 sq. m (763.1 sq. ft)