



## Strathdon Drive, SW17

£1,800 Per calendar month

A well presented two double bedroom apartment in a purpose built development that has a spacious reception room with a private balcony and modern kitchen.

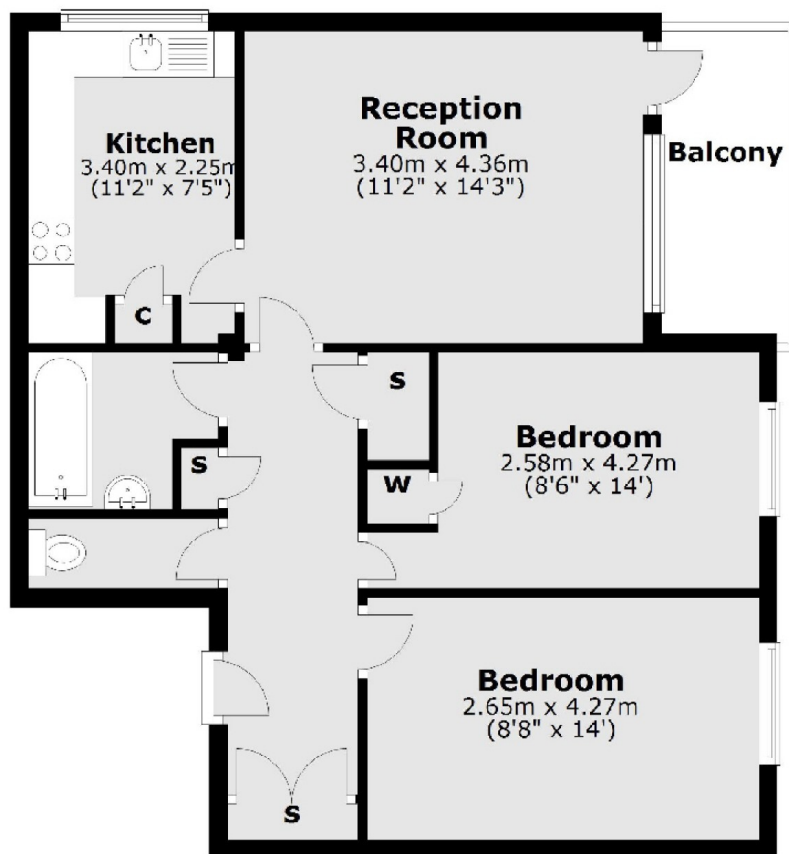
Well located for the local amenities of Garratt Lane & Southside shopping centre whilst allowing good access to Earlsfield rail station and Tooting Broadway tube station.

### Features

- Two Double Bedrooms
- Modern Kitchen
- Spacious Reception Room
- Private Balcony
- Neutral Decor
- Close to St Georges Hospital

# Strathdon Drive, London, SW17

## First Floor



Main area: Approx. 60.0 sq. metres (645.8 sq. feet)  
Plus balconies, approx. 5.0 sq. metres (54.2 sq. feet)