



Heaton Road, CR4

£535,000

A sublime split level maisonette set over the first and top floors of this handsome Victorian building with a footprint that extends to 1000 sqft. The property retains three bedrooms and a private garden.

Nestled just off the open spaces of Figges Marsh, Heaton Road is perfectly placed for the amenities of London Road and the frequent Thameslink rail services of Tooting mainline station.

Features

- Three Bedrooms
- Own Front Door
- Superb Kitchen
- Front Reception Room
- Large Garden
- Potential to Extend (STPP)



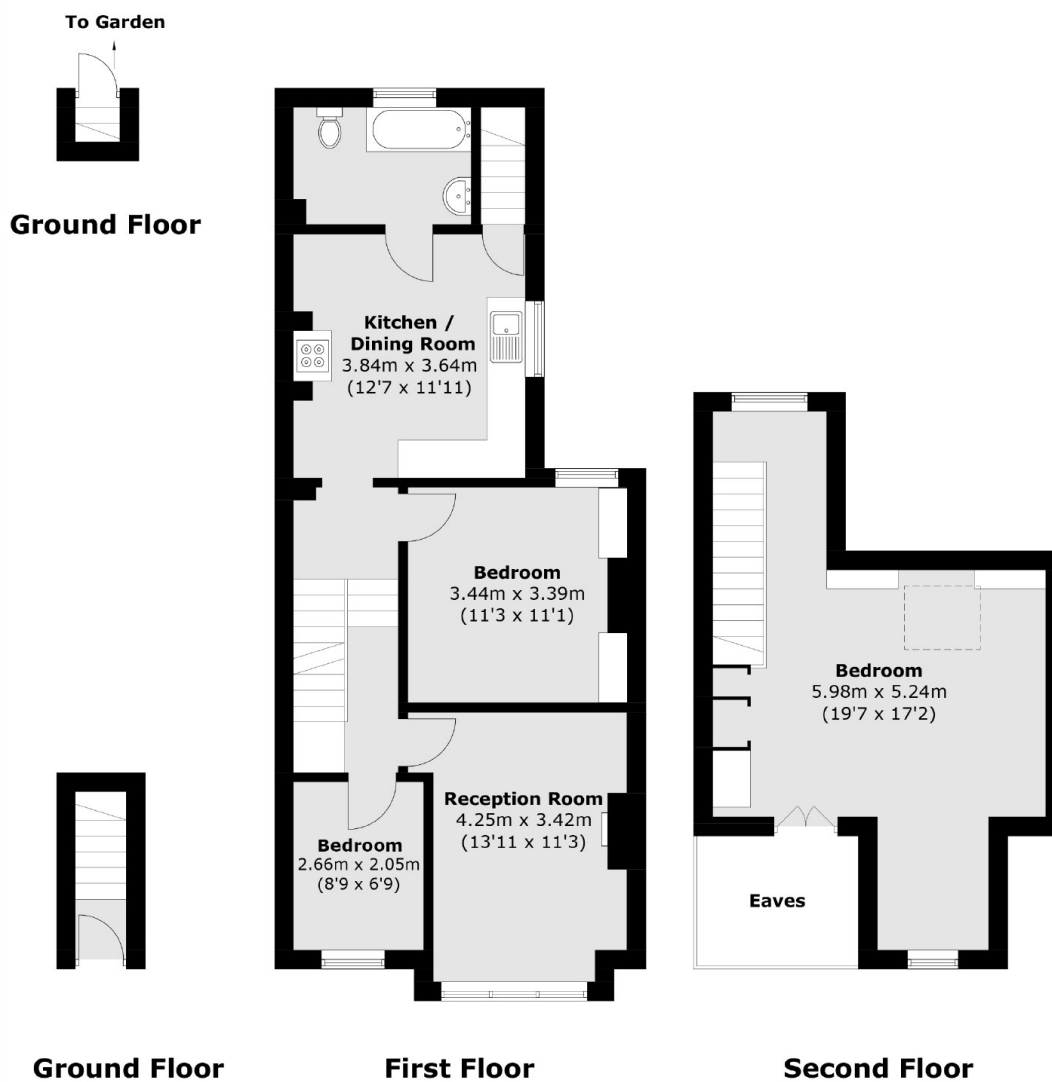
Heaton Road, CR4

Opening onto a large and spacious hallway, the property is well arranged with a large eat-in kitchen at the rear, furnished with a vast array of wall and base units, solid worktops and a comfortable dining area with steps leading to a private rear garden. The first floor is further balanced with two bedrooms and a superb front reception room composed of plantation shutters and bespoke shelving.

Over the top floor, there is a stunning principal third bedroom with ample storage and further scope for extending and alterations (STPP). The property benefits from a long lease and a share of the freehold.



Heaton Road, Mitcham, CR4



Total area (approx.): 92.9 sq. m (1,000.0 sq. ft)
(Excluding Eaves)