



Recovery Street, SW17

£475,000

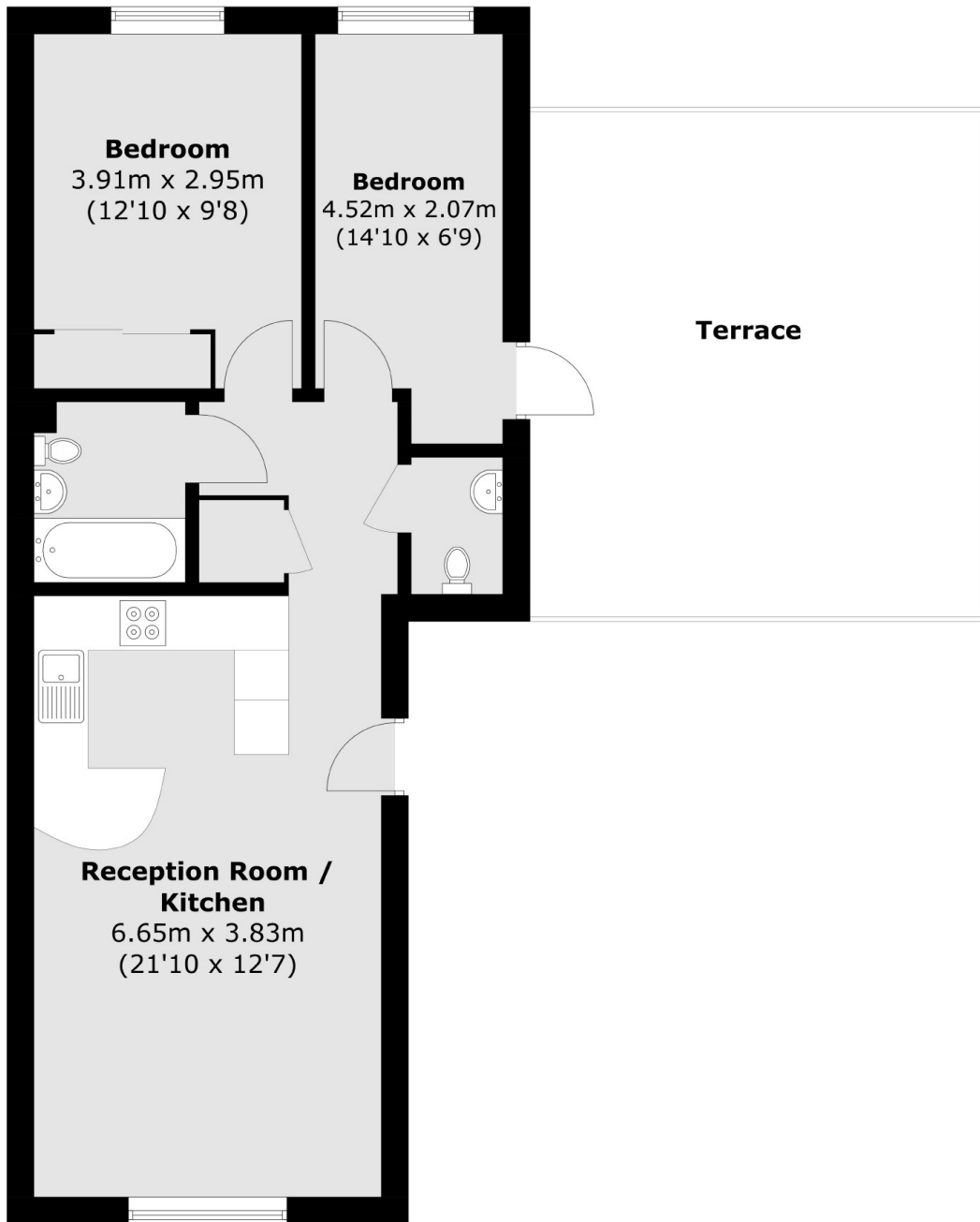
A spacious and generous two double bedroom penthouse apartment moments from central Tooting with an open-plan kitchen/reception room, two double bedrooms and a superb private terrace.

On the doorstep of Tooting High Street, the property is enviably located within walking distance of the many boutique shops, bars and eclectic mix of eateries it has to offer. Excellent transport links of Tooting Broadway station are also a stones throw away.

Features

- Two Double Bedrooms
- Private Terrace
- Two Bathrooms
- Modern Apartment
- Desirable Location
- Chain Free

Recovery Street,
London, SW17



Total area (approx.): 57.7 sq. m (621.1 sq. ft)
Terrace area : 27.8 sq. m (299.2 sq. ft)