



Ribblesdale Road, SW16

£1,150,000

Dexters



Ribblesdale Road, SW16

A truly rare example of an imposing semi-detached Victorian home in the heart of Furzedown extending to approx 1555 sqft with ornate period features throughout comprising four double bedrooms, potential to extend (STPP) and a large garden.

Retaining all original features throughout, the property opens onto a spacious double reception room that is beautifully arranged with original fireplaces and period coving, with an integral study room. The heart of the home is at the rear with a spacious and wonderfully arranged kitchen boasting a vast array of wall and base units, integrated appliances, a breakfast island and french doors leading out onto a stunning rear garden.

Over the first floor, there are four spacious double bedrooms and a family bathroom with an abundance of scope for further extending via the loft & garden (STPP).

Arguably one of the most sought after roads in Furzedown, Ribblesdale Road is a quiet tree lined street located moments away from it's many shops, with the vast open spaces of Tooting Bec Common within walking distance. The excellent transport links of Tooting Broadway Underground and Streatham Common Railway station are also nearby.

Features

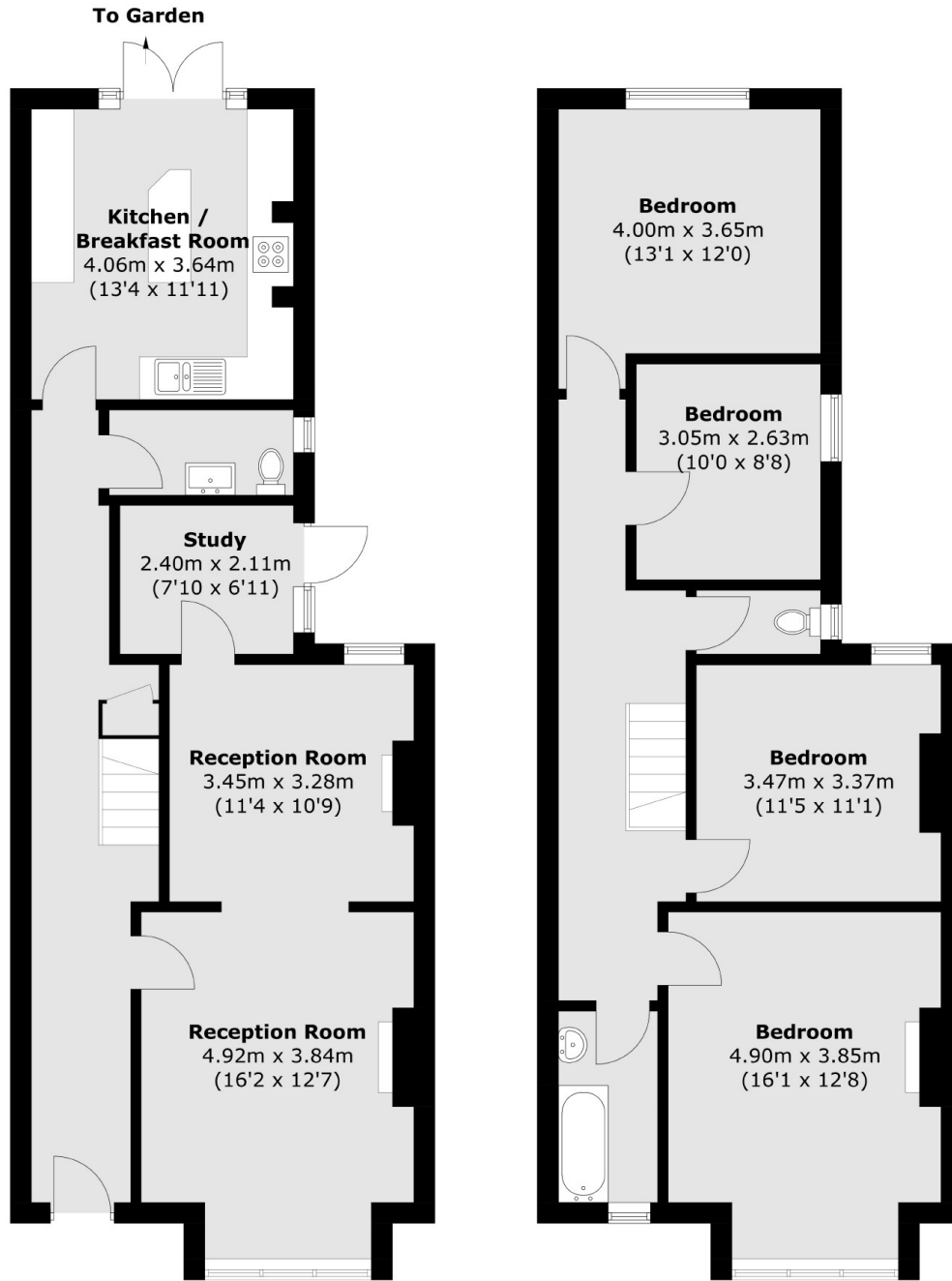
- Four Bedrooms
- Eat-In Kitchen
- Large Garden
- Potential to Extend (STPP)
- Ornate Features
- Furzedown Village







Ribblesdale Road, London, SW16



Ground Floor

First Floor

Total area (approx.): 144.5 sq. m (1555.4 sq. ft)