



Thrale Road, SW16

£2,295 Per calendar month

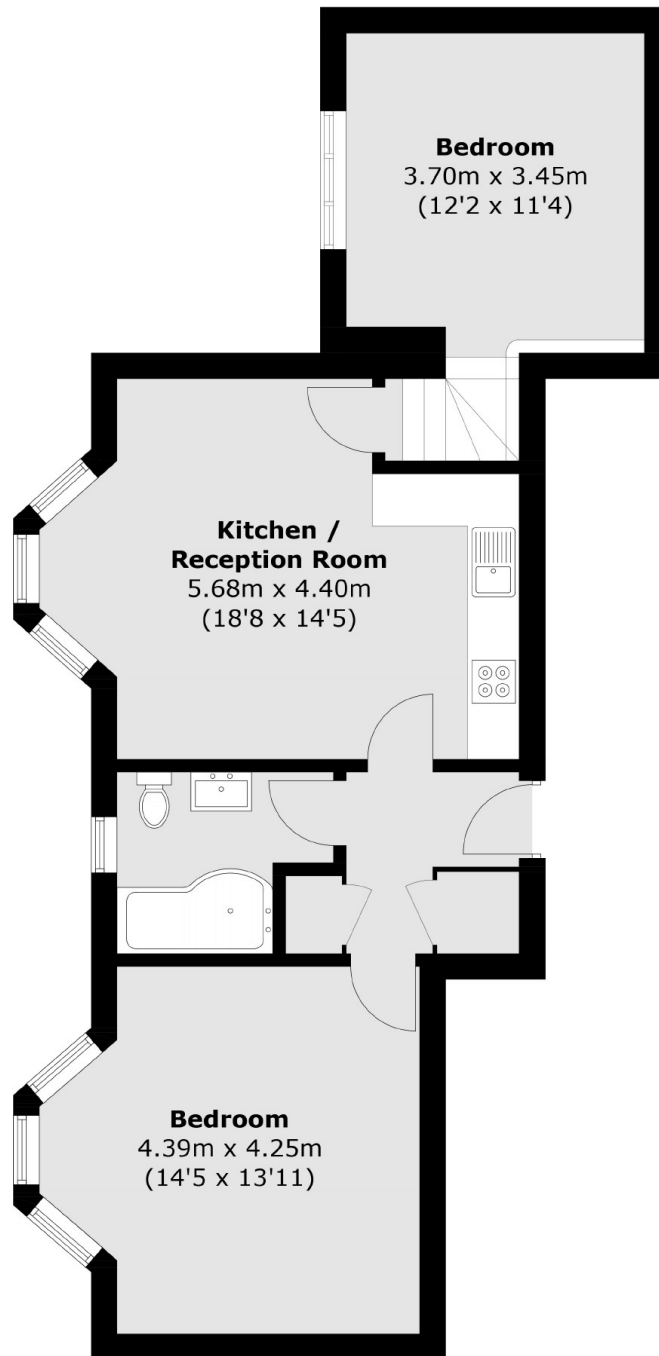
A beautifully presented first floor flat comprising of a spacious eat-in kitchen, separate reception, two double bedrooms and a modern bathroom. This property also benefits from a large private garden.

Thrale Road is nestled away in the highly desirable Furzedown Village with the vast amenities, close knit community and shops and bars the area has to offer with Tooting Bec Common also within a short walk away. Excellent transport links can be found via Tooting Broadway Underground and Streatham Overground stations.

Features

- Two Double Bedrooms
- Open Plan Kitchen/Living
- Excellent Transport Links
- Spacious Private Garden
- Parking Space
- Tooting Bec Common

Thrale Road, London, SW16



Total area (approx.): 62.9 sq. m (677.0 sq. ft)