



Lessingham Avenue, SW17

£650,000

A stunning and beautifully presented freehold home in the highly desirable Totterdown Conservation area with ornate period features throughout, a large garden and further scope for extending (STPP).

Lessingham Avenue is a quiet tree lined residential street nestled moments away from the green open spaces of Tooting Bec Common and the many shops, bars and restaurants of Tooting High Street with easy access to bus links and both Tooting Bec & Broadway Underground stations.

Features

- Two Double Bedrooms
- Desirable Location
- South Facing Garden
- Tooting Bec Common
- Potential to Extend (STPP)
- Period Features



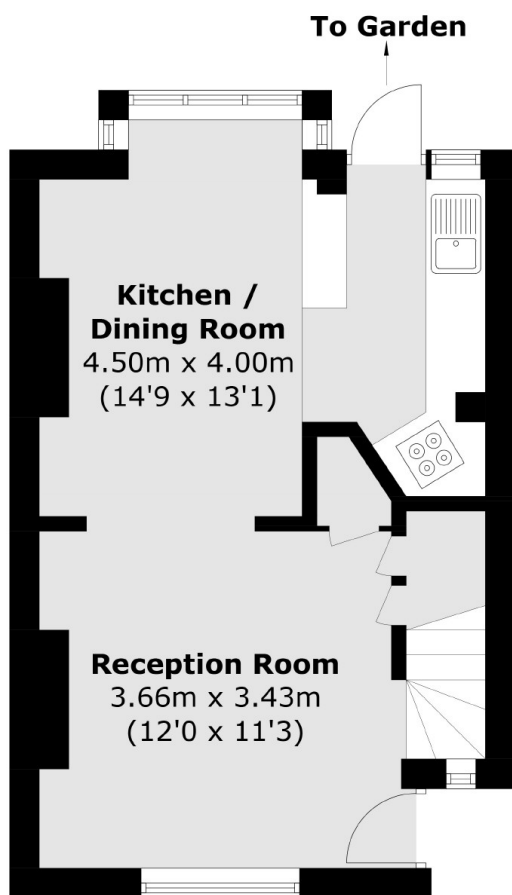
Lessingham Avenue, SW17

With a handsome and characterful exterior, the property welcomes you in via a beautiful front reception room that retains solid wooden floors and a fireplace with a through dining room making for a comfortable dining and socialising area. A well arranged kitchen sits at the rear with a breakfast island, solid worktops and a vast array of wall and base units with direct access onto a south west facing garden offering great scope for extending (STPP).

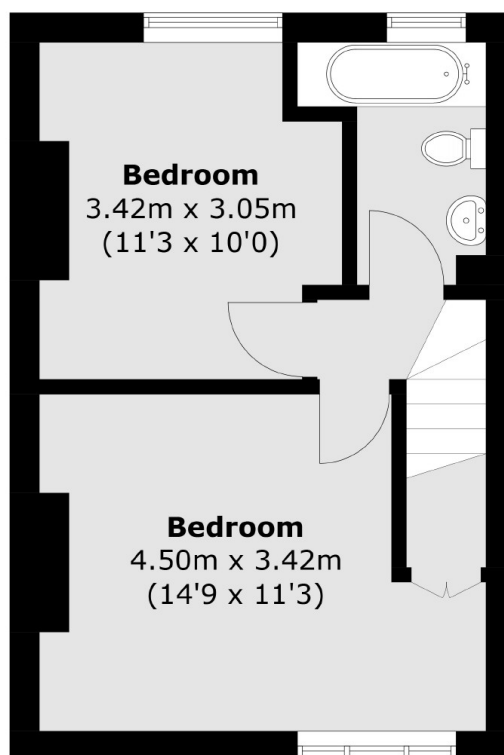
The first floor retains two generous double bedrooms with a three piece family bathroom and further scope for extending via the loft (STPP). With a larger than average footprint, the property is ideal for an incoming purchaser.



Lessingham Avenue, London, SW17



Ground Floor



First Floor

Total area (approx.): 62.9 sq. m (677.0 sq. ft)