



Trevelyan Road, SW17

£825,000

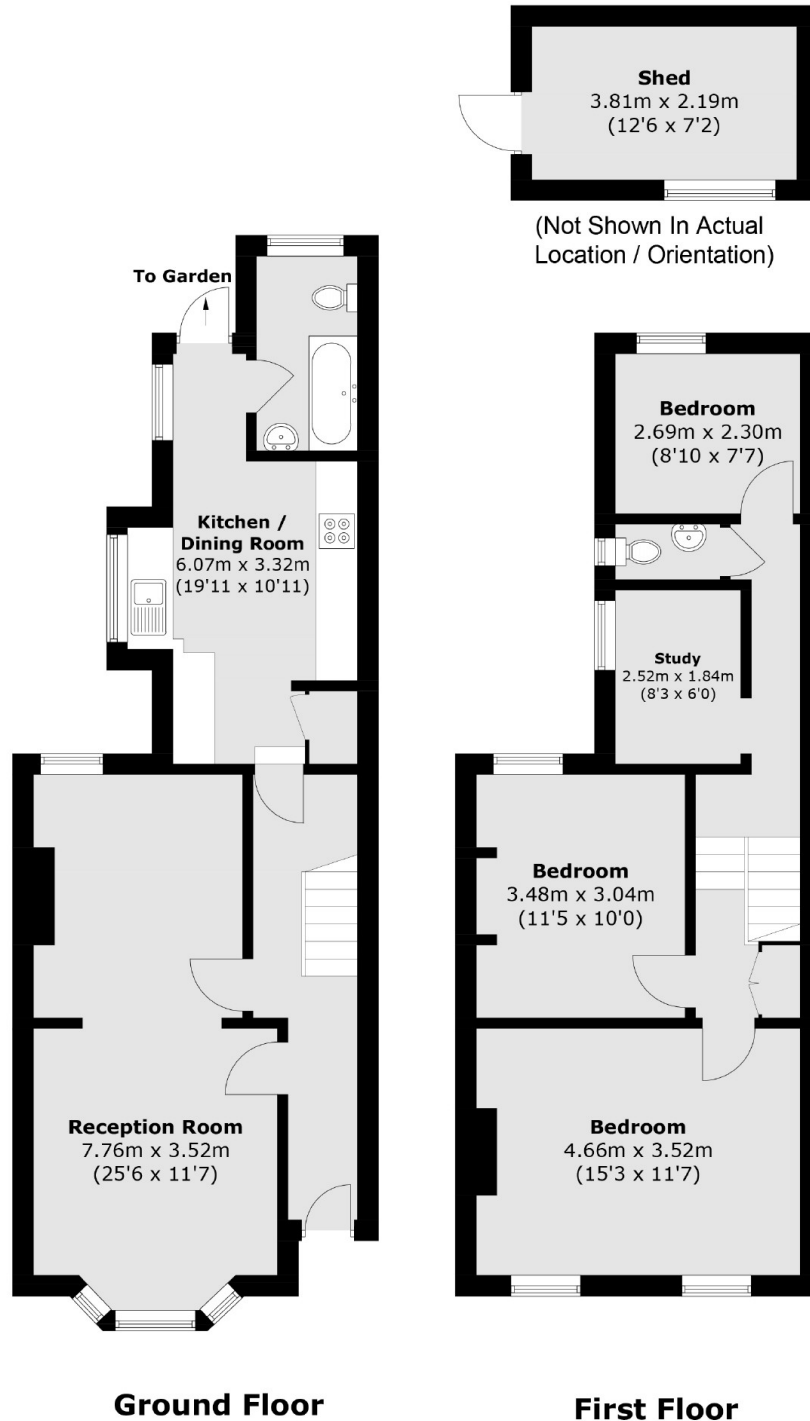
A charming and delightful three bedroom period home occupying a large plot on a highly desirable road in Tooting. Accommodation comprises a double reception room, separate kitchen, downstairs bathroom, three bedrooms and a superb south facing rear garden.

Trevelyan Road is a quiet tree lined residential street with a vast array of boutiques, shops, bars and restaurants on the doorstep. The wide transport links of Tooting Broadway Underground and Tooting Railway stations are also within walking distance.

Features

- Three Bedrooms
- Potential to Extend (STPP)
- Chain Free
- Period House
- Desirable Location
- South Facing Garden

Trevelyan Road, London, SW17



Total area (approx.): 102.4 sq. m (1,102.2 sq. ft)
Shed : 8.5 sq. m (91.5 sq. ft)