



Cranmer Terrace, SW17

£3,600 Per calendar month

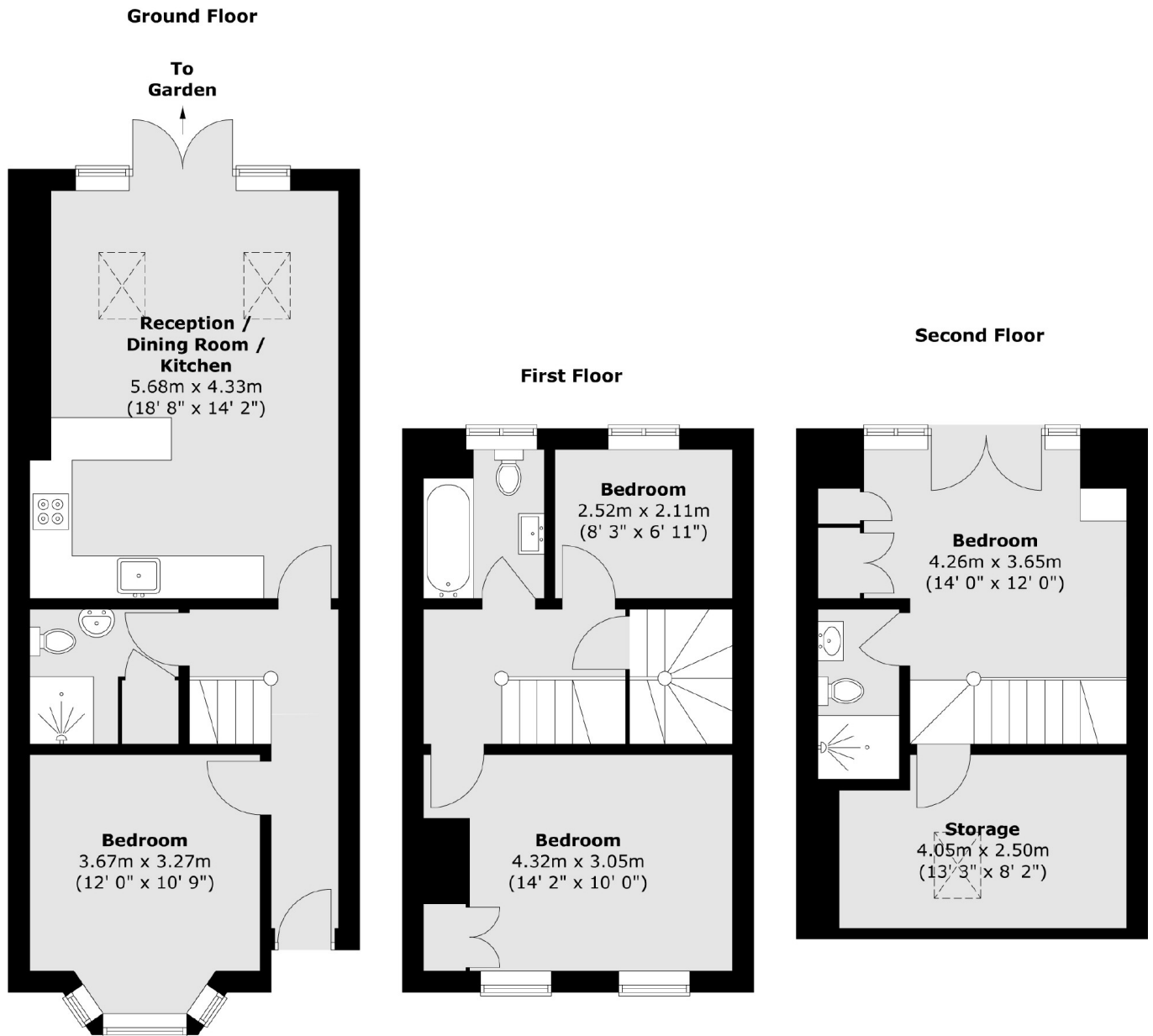
A homely and spacious four bedroom house with a bright open plan kitchen/reception leading on to a private patio garden. This property also benefits from three bathrooms.

Cranmer Terrace is situated within a popular area of roads providing easy access to an excellent array of local restaurants, bars and shopping facilities along Tooting High Street and Tooting Broadway underground station, with its frequent Northern Line service.

Features

- House
- Four Bedrooms
- Open Plan
- Three Bathrooms
- Private Garden
- Wandsworth Council

Cranmer Terrace, London, SW17



Total area (approx.) : 109 sq. m (1173 sq. ft)