



## Pitcairn Road, CR4

£485,000

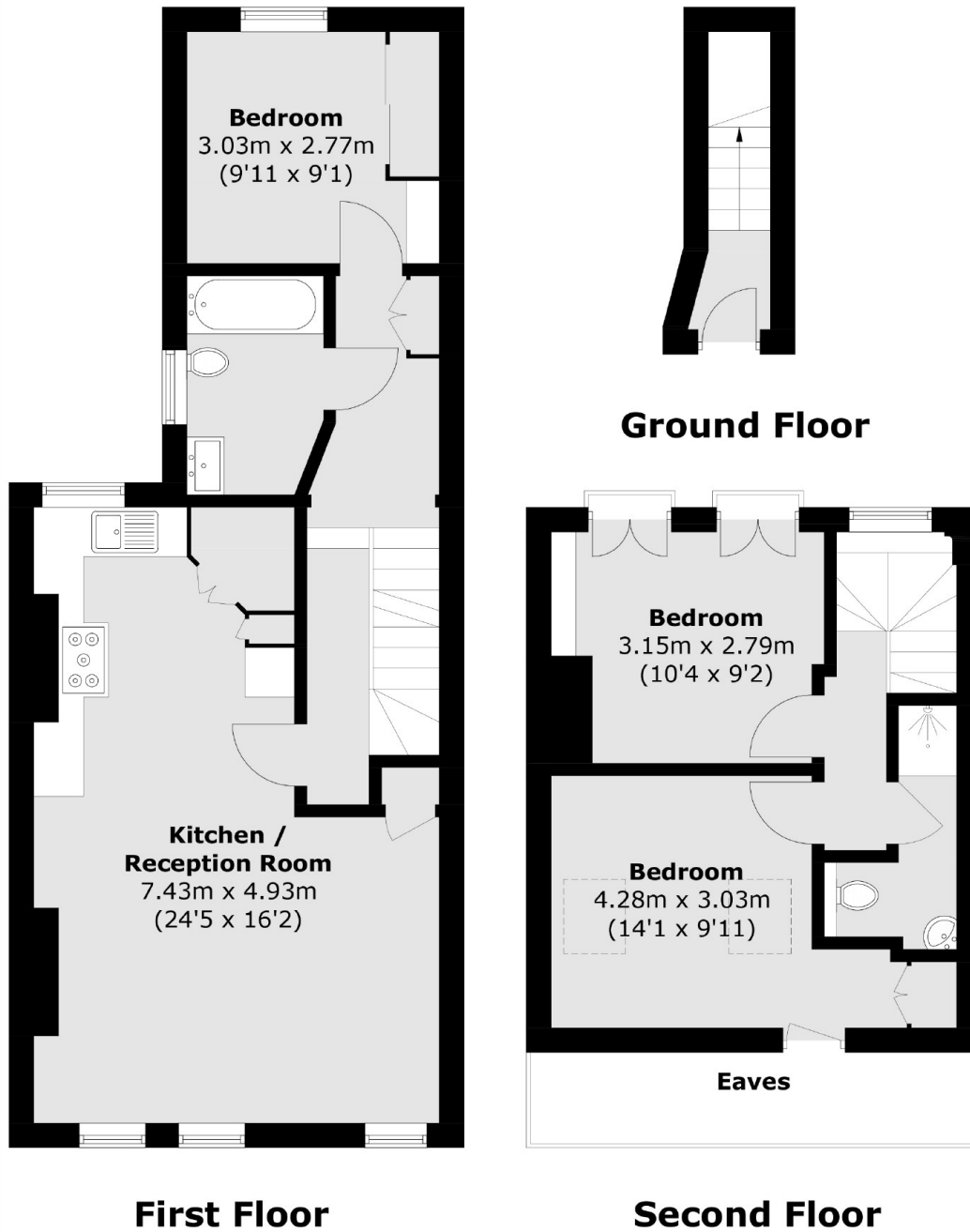
A stunning example of a three bedroom upper floor flat that has been lovingly maintained over the years with excellent proportions throughout. This accommodation comprises of three bedrooms, two bathrooms and a generous open-plan kitchen/reception room which overall extends to just under 1000 sqft.

Nestled just off the open spaces of Figges Marsh, Pitcairn Road is perfectly placed for the amenities of London Road and the frequent Thameslink rail services of Tooting mainline and remains on the doorstep of the many shops, bars and restaurants of central Tooting with Tooting Broadway Underground station also within walking distance.

### Features

- Three Bedrooms
- Two Bathrooms
- Open-Plan Kitchen/Reception Room
- Split Level
- Stylish Apartment
- Just Under 1000 SQFT

# Pitcairn Road, Mitcham, CR4



Total area (approx.): 86.7 sq. m (933.2 sq. ft)  
(Excluding Eaves)