



## Links Road, SW17

£650,000

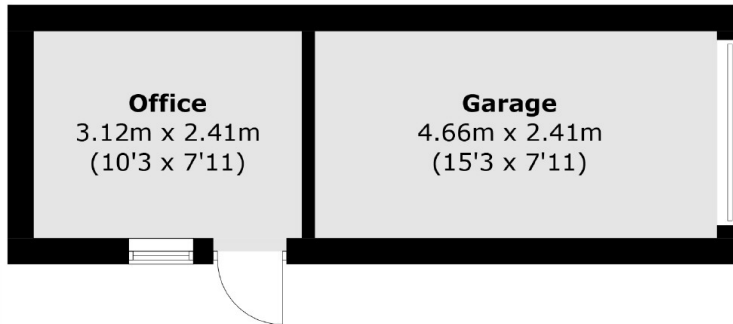
A charming three bedroom end of terrace freehold home occupying a generous plot with a large garden and a garage. The property retains a front reception room with an original fireplace, an eat-in kitchen with direct access onto a garden, with three bedrooms and a family bathroom occupying the first floor. The property also benefits from superb extension potential (STPP) via the loft & garden.

Links Road is a desirable residential street occupying great proximity to central Tooting & Streatham town centre. The vast shops, bars and restaurants of Tooting Broadway as well as excellent transport links of the Underground and Tooting Railway are within walking distance.

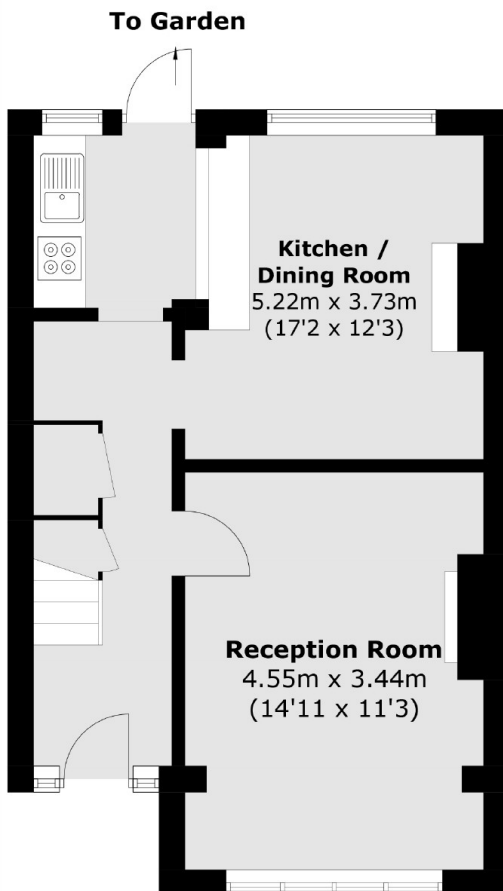
### Features

- Three Bedrooms
- End of Terrace
- Garage
- Potential to Extend (STPP)
- Chain Free
- Blank Canvas

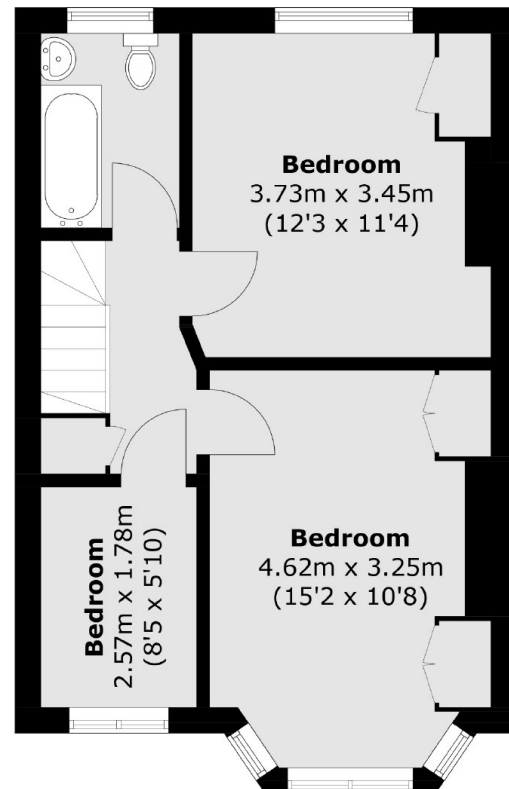
# Links Road, London, SW17



(Not Shown In Actual Location / Orientation)



**Ground Floor**



**First Floor**

Total area (approx.): 84.3 sq. m (907.4 sq. ft)  
Outbuilding (approx.): 19.1 sq. m (205.6 sq. ft)