



Upper Tooting Road, SW17

£365,000

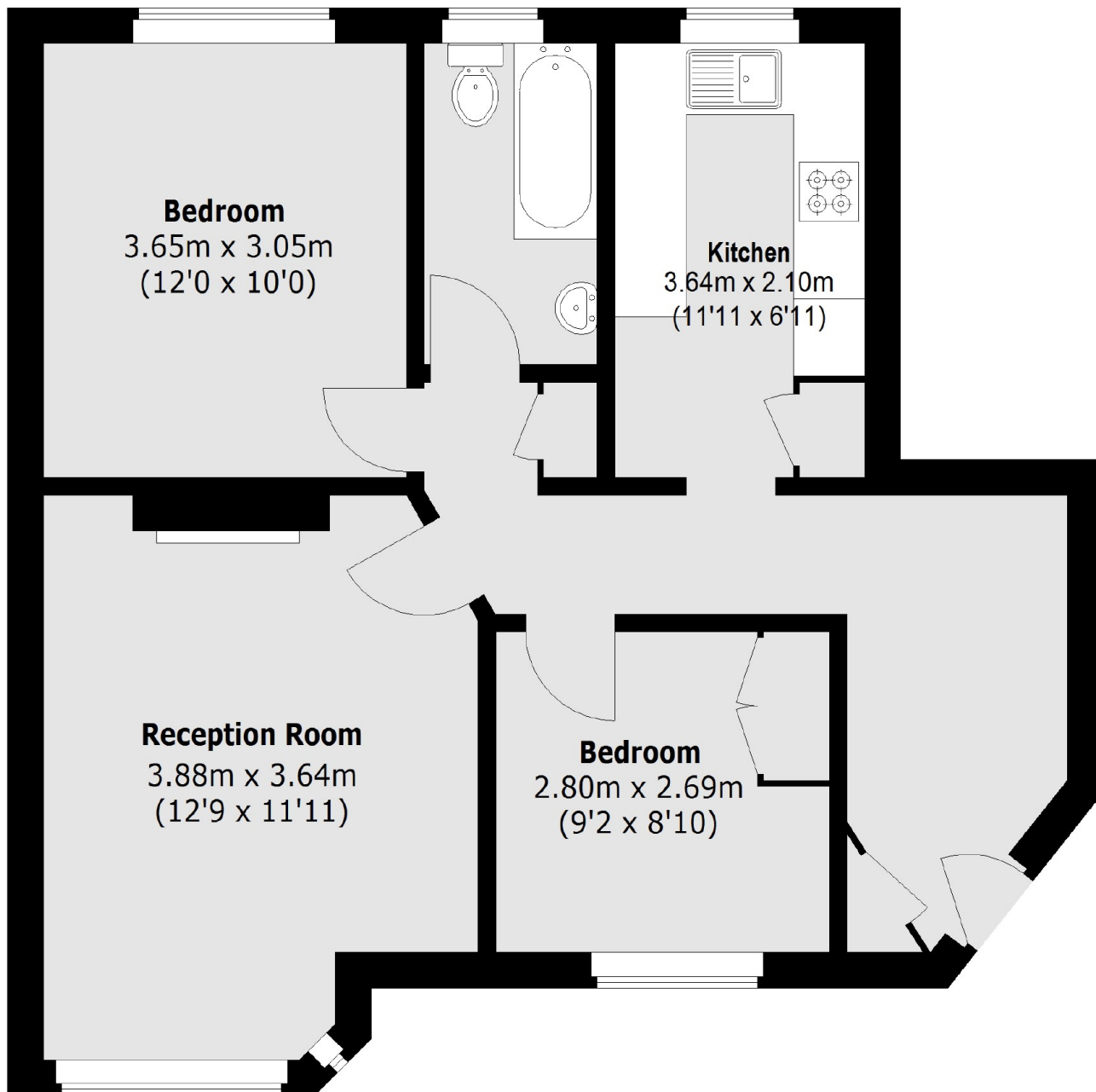
An impressive two double bedroom apartment set in this charming mansion block with excellent proportions throughout. Accommodation includes a large separate reception room, a kitchen and two generous double bedrooms. The property retains a healthy lease and is sold chain free.

Holmbury Court is located in the heart of Tooting with the vast amenities, shops, bars & restaurants on the doorstep, with Tooting Market a stone throws away. The excellent transport links Tooting Bec Underground station and green open spaces of Tooting Bec Common are also within walking distance.

Features

- Two Double Bedrooms
- Chain Free
- Long Lease
- Desirable Location
- Separate Kitchen
- Large Reception

Upper Tooting Road, London, SW17



Total area (approx.): 60.9 sq. m (655.5 sq. ft)