



Byton Road, SW17

£650,000

A remarkable three double bedroom maisonette set over the first and second floors of this handsome Victorian building extending to just under 1,100 sqft of superb accommodation with further potential to extend STPP.

Byton Road is a highly desirable residential road located in central Tooting with a vast array of shops, bars and restaurants on the doorstep, with the transport links of Tooting Railway Thames Link Overground and Tooting Broadway Tube stations within walking distance.

Features

- Three Bedrooms
- Two Bathrooms
- Open-Plan Reception/Kitchen
- Just Under 1,100 sqft
- Potential To Extend STPP
- Chain Free



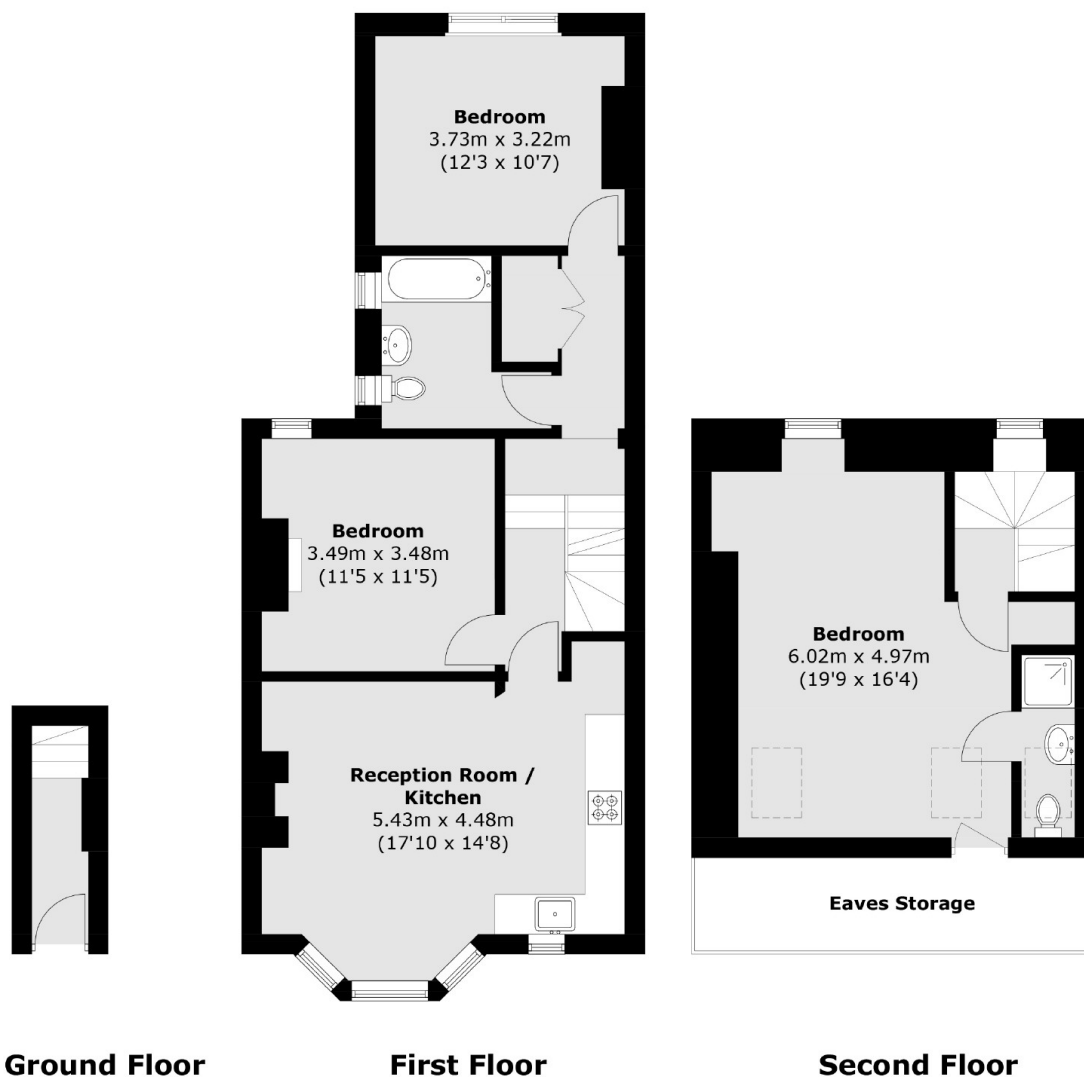
Byton Road, SW17

With its own front door, and welcoming you in via a spacious hallway, the property benefits from a split-level layout with a generous front reception room with a practical yet stylish kitchen with good storage, solid worktops and ample space for dining which is wonderfully furnished.

Over the first and second floors, there are three generous double bedrooms and two stylish three piece bathrooms with the principal bedroom occupying the top floor. The property boasts excellent storage with several large built-in wardrobes as well as additional storage in the eaves.



Byton Road, London, SW17



Total area (approx.): 96.2 sq. m (1,035.4 sq. ft)
(Excluding Eaves)