

Moffat Road, SW17

£2,750 Per calendar month

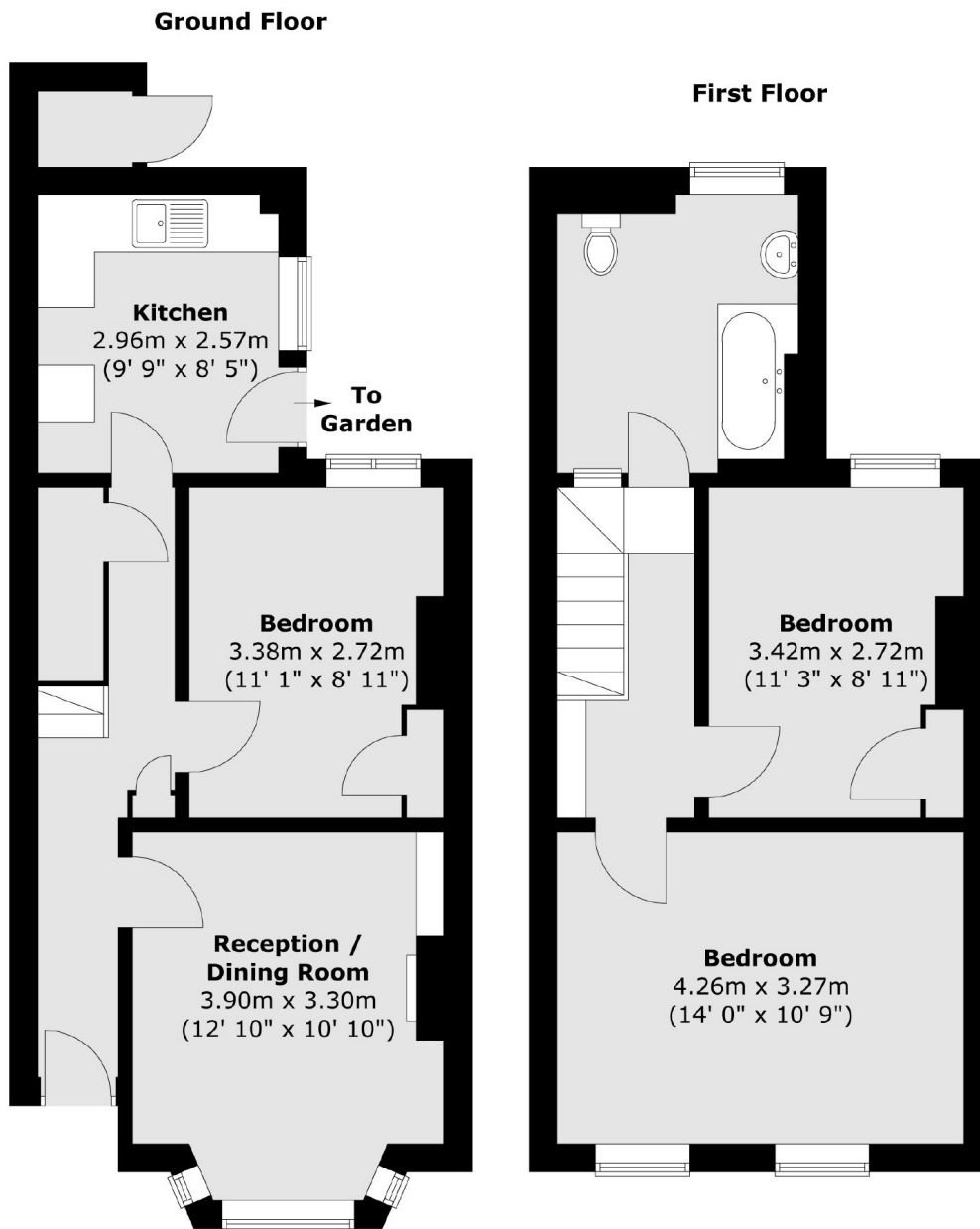
A three double bedroom house with a spacious reception room, separate kitchen, bathroom and private garden. The property is situated on a quiet residential Cul de Sac in Tooting.

Moffat Road is enviably located by Upper Tooting Road and with easy access to the many bars, shops and restaurants. The property is ideally located for the easy transport connections of both Tooting Bec and Tooting Broadway Underground Stations as well as the many bus links.

Features

- Victorian House
- Three Double Bedrooms
- Separate Kitchen
- Wooden Flooring
- Private Garden
- Prime Location

Moffat Road, London, SW17



Total area (approx.) : 76.3 sq. m (821 sq. ft)
Total store area (approx.) : 0.8 sq. m (8 sq. ft)