



Eatonville Road, SW17

£1,500,000

Dexters



Eatonville Road, SW17

An impressive and truly remarkable semi-detached freehold home occupying an envious plot with internal accommodation that extends to 2,566 sq'ft offering an abundance of external space with a garage and off-street parking.

With a handsome and charming exterior, the property welcomes you in via a bright and spacious hallway opening onto a generous and well presented front reception furnished with plantation shutters and stained period glass. The heart of the home lies at the rear with a 24'ft open plan kitchen/dining area with a stylish integral kitchen, a comfortable seating area and bi-folding doors opening onto a generous garden. The ground offers further practicality with a utility, garage and office and w/c.

The first floor has been conveniently arranged to include two generous double bedrooms with the principal bedroom coupled with an en-suite and a family bathroom. Over the top floors, there are two further bedrooms and a three piece bathroom.

Eatonville Road is a beautiful tree-lined residential street positioned moments away from Tooting Bec Underground station and the vast green open spaces of Wandsworth Common. The many shops, bars and restaurants of Bellevue Road and Balham and Tooting town centres are also nearby.

Features

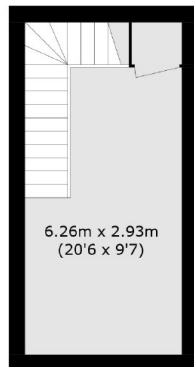
- Four Bedrooms
- Over 2,500 Sqft
- Office & Utility Room
- Large Garden
- Off-Street Parking
- Desirable Location



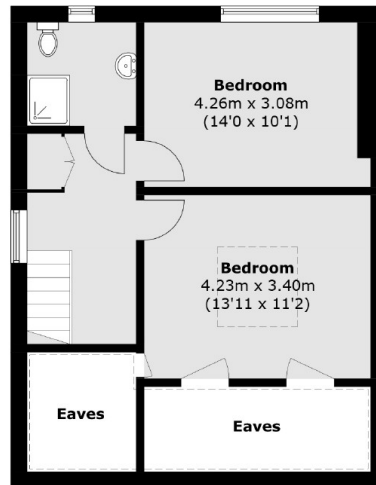




Eatonville Road, London, SW17

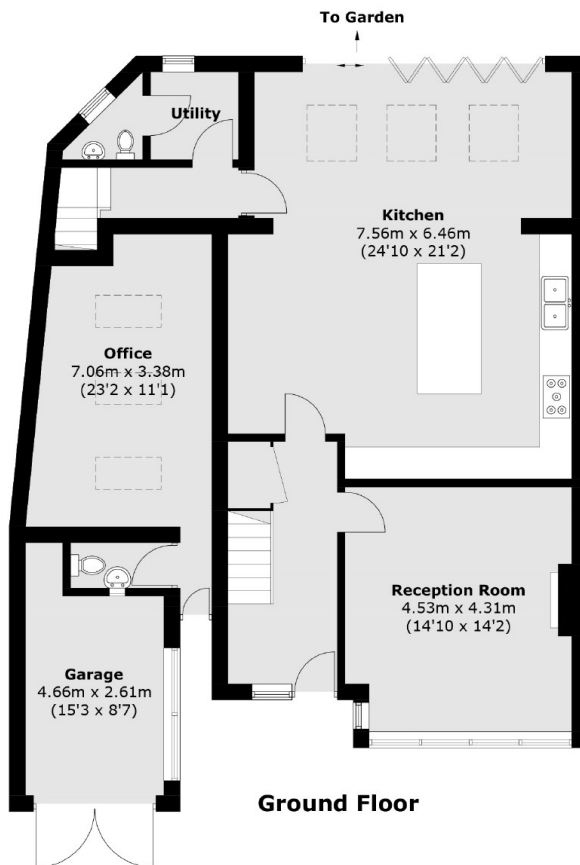


Lower Ground Floor

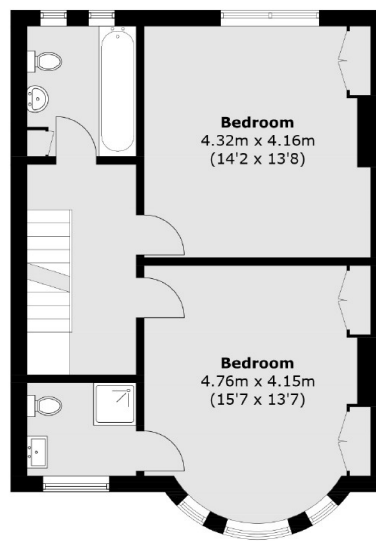


Second Floor

= Reduced headroom below 1.5m / 5'0



Ground Floor



First Floor

Total area (approx.): 226.8 sq. m (2,566.1 sq. ft)
Garage (approx.): 10.8 sq. m (116.2 sq. ft)