



Ipswich Road, SW17

£675,000

A great opportunity to purchase an end of terrace freehold home offering great scope for modernisation and alteration. The property offers five generous double bedrooms and two bathrooms with a spacious open-plan kitchen/reception room over the ground floor with direct access onto a private garden. The property is sold chain free & benefits from off-street parking.

Ipswich Road is a quiet residential road located in the ABC roads with great proximity to central Tooting and Furzedown Village. The vast shops, bars and restaurants of Tooting Broadway as well as excellent transport links of the Underground and Tooting Railway are within walking distance.

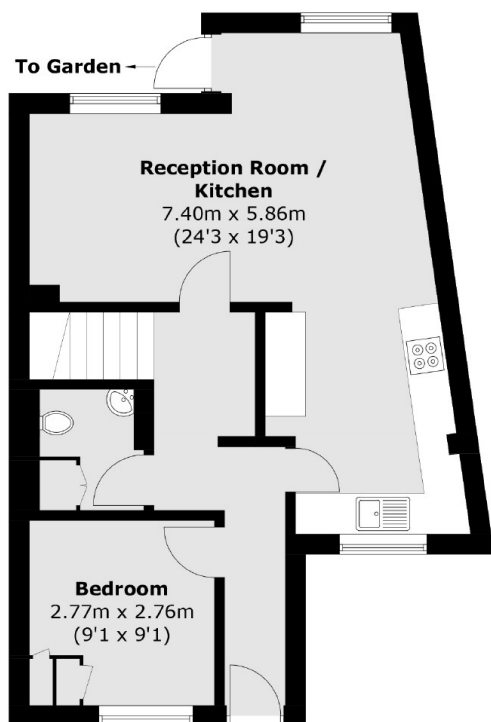
Features

- Five Double Bedrooms
- Off-Street Parking
- Chain Free
- Blank Canvas
- ABC Roads
- Desirable Location

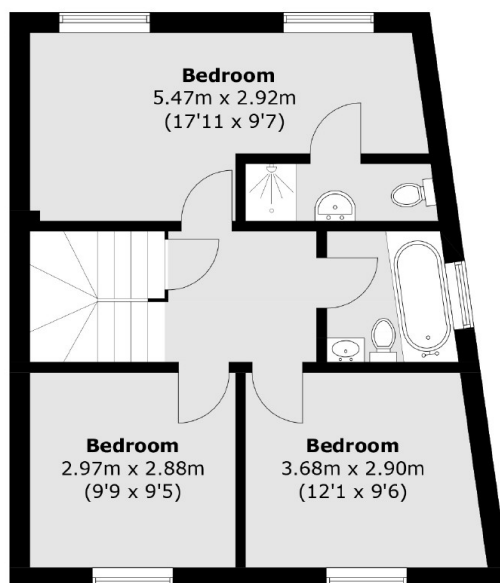
Ipswich Road, London, SW17



Second Floor



Ground Floor



First Floor

Total area (approx.): 139.4 sq. m (1,500.5 sq. ft)