



## Graveney Road, SW17

### £725,000

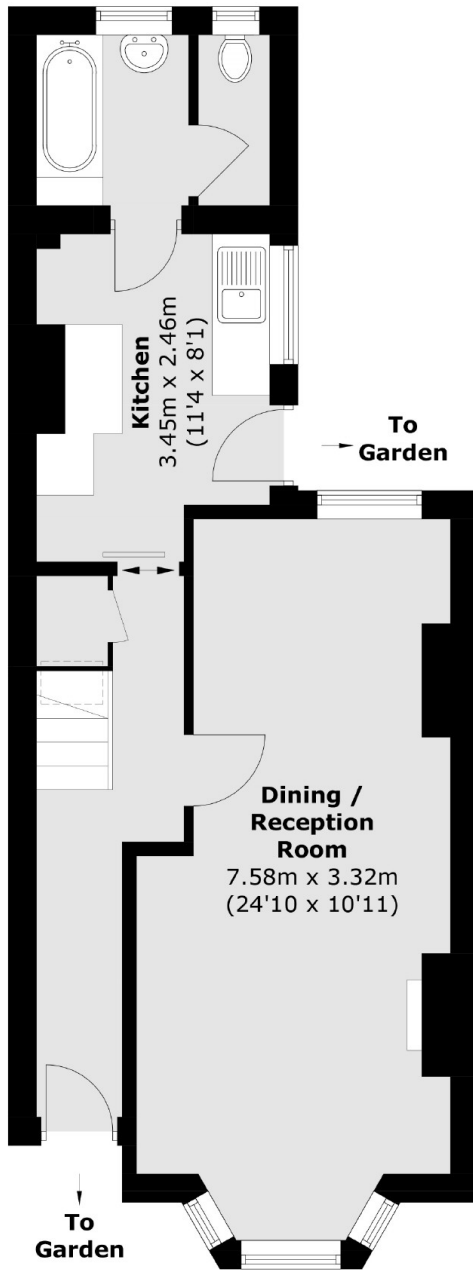
A charming freehold home retaining all originality with an abundance of scope and potential for modernisation and further alterations (STPP) with current accommodation comprising a double reception room on the ground floor, a spacious rear kitchen and family bathroom, a private rear garden and three double bedrooms over the first floor.

Graveney Road is conveniently located for the bustling shops, bars and amenities of central Tooting with the infamous Tooting Market also on the doorstep. Excellent transport links of Tooting Broadway Underground tube station is also within walking distance.

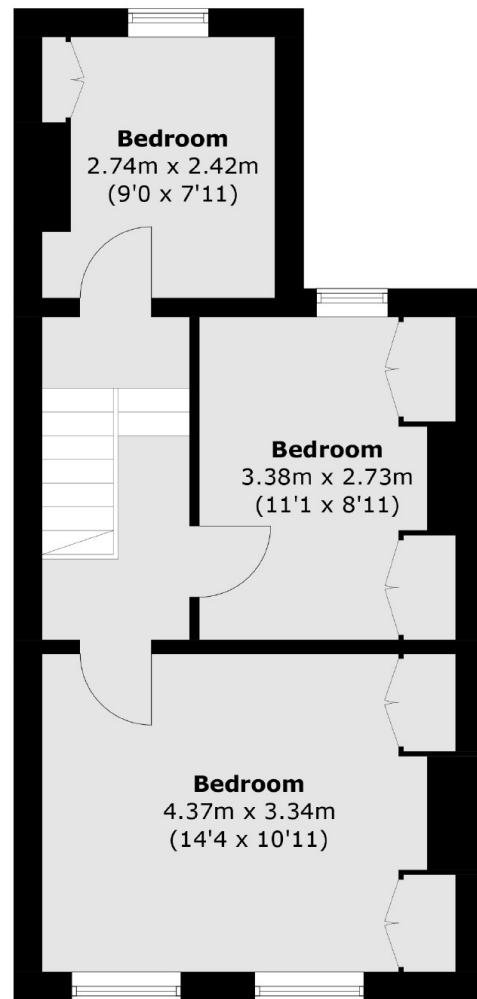
### Features

- Three Double Bedrooms
- Period Home
- Potential to Extend (STPP)
- South Facing Garden
- Blank Canvas
- Chain Free

# Graveney Road, London, SW17



**Ground Floor**



**First Floor**

Total area (approx.): 80.4 sq. m (865.4 sq. ft)