



## Ashbourne Road, CR4

£2,900 Per calendar month

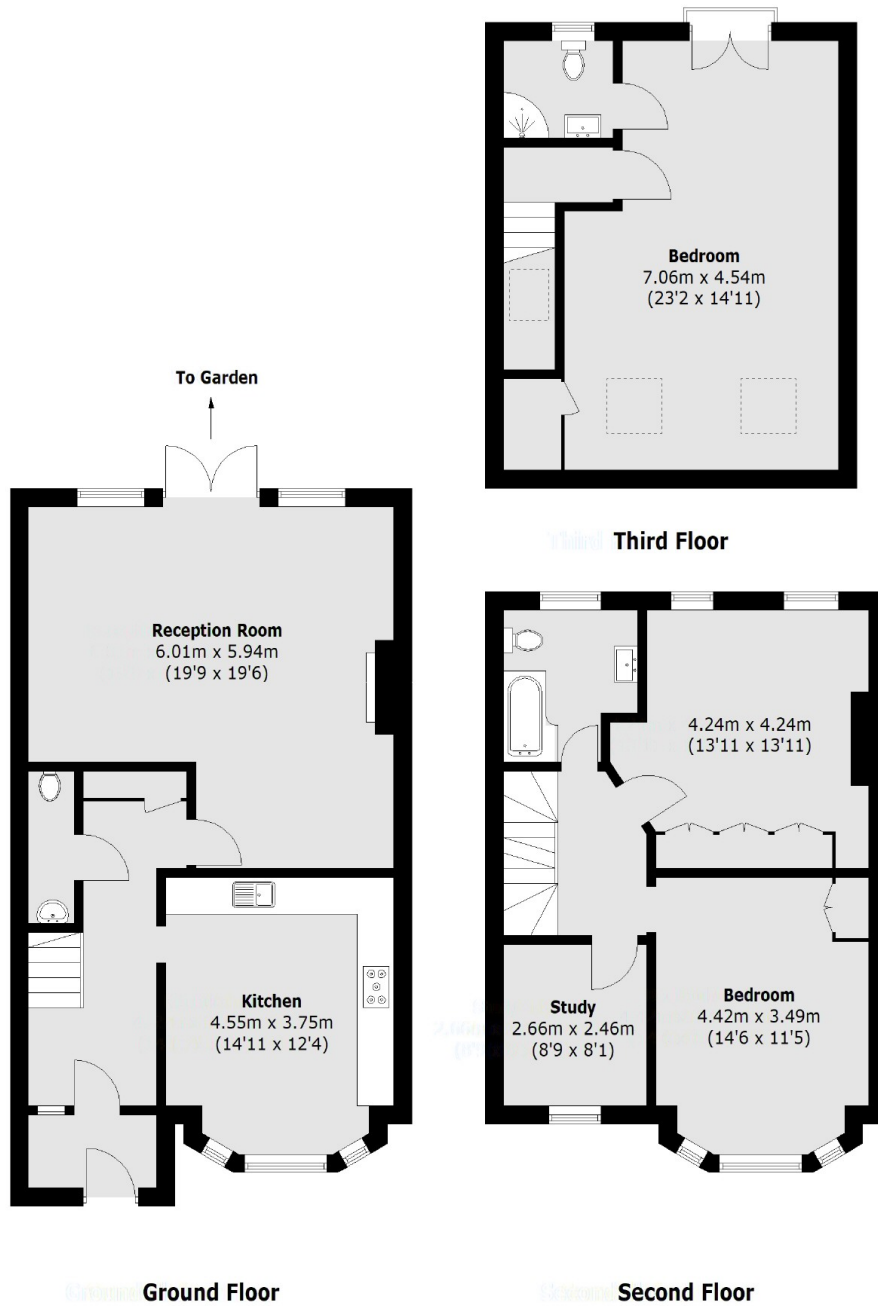
A well presented four bedroom house with modern finishes throughout, a large double reception room with dining space, separate kitchen with granite worktops, ground floor WC, two bathrooms and a private garden.

The property is situated on a residential Road in Tooting, within close proximity to Tooting Overground Station as well as the Gorrington Park Pub and other local amenities.

### Features

- Four Bedroom House
- Ample Living Space
- Separate Eat-In Kitchen
- Two Bathrooms
- Large Garden
- Modern Finish

# Ashbourne Road, Tooting, CR4



Total area (approx.): 154.2 sq. m (1659.8 sq. ft)