



Charlmont Road, SW17

£425,000

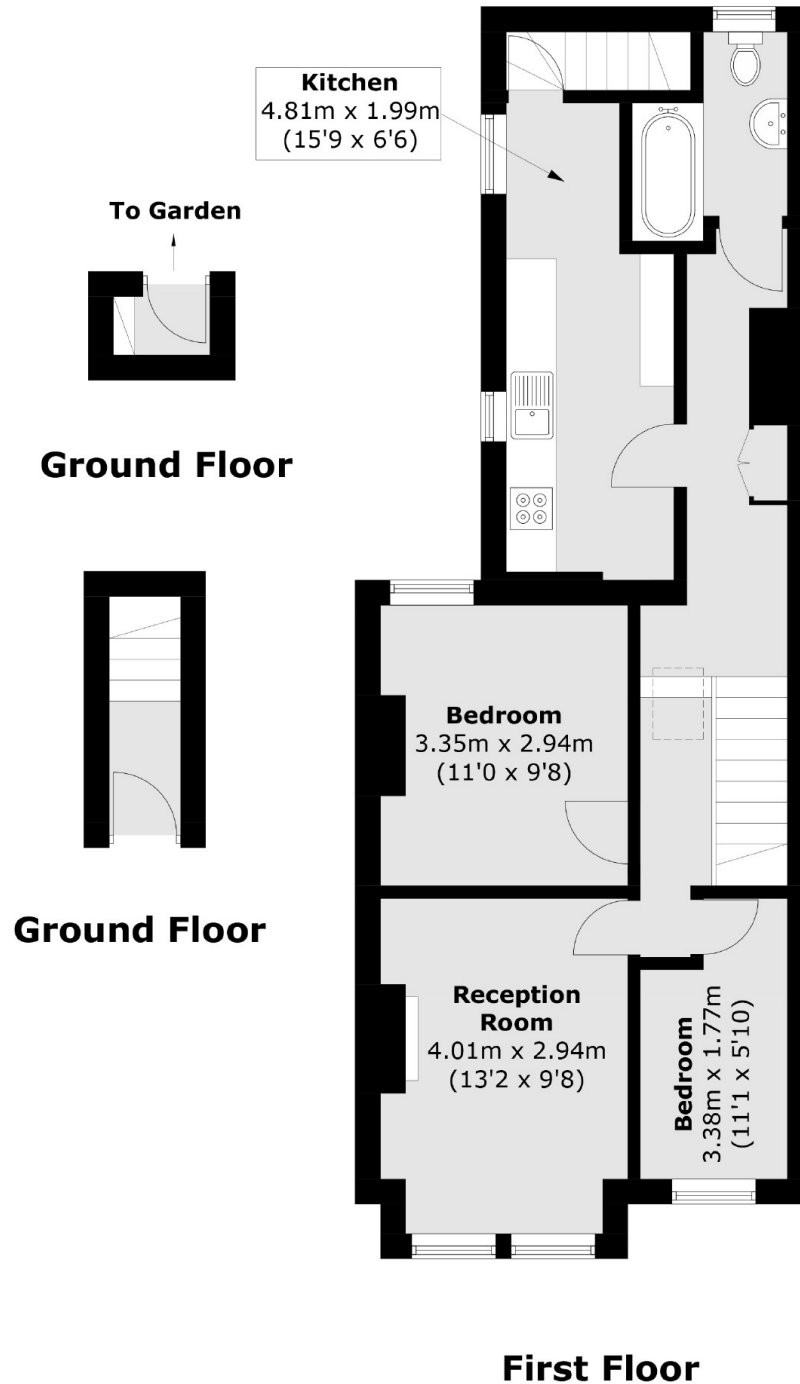
A generous and well positioned upper maisonette occupying the first and top floors of this handsome Victorian building with two double bedrooms, a spacious front reception room, eat-in kitchen, three piece bathroom and private garden. The property retains a long lease, loft potential extension (STPP & demise).

Charlmont Road is a residential street conveniently located for the many shops, bars and restaurants of central Tooting with Tooting Broadway Underground and Tooting Railway stations within equidistant proximity.

Features

- Two Double Bedrooms
- Chain Free
- Own Front Door
- Private Garden
- Loft Extension Potential (STPP & Demise)
- Blank Canvas

Charlmont Road, London, SW17



Total area (approx.): 61.0 sq. m (656.6 sq. ft)