



Longmead Road, SW17

£750,000

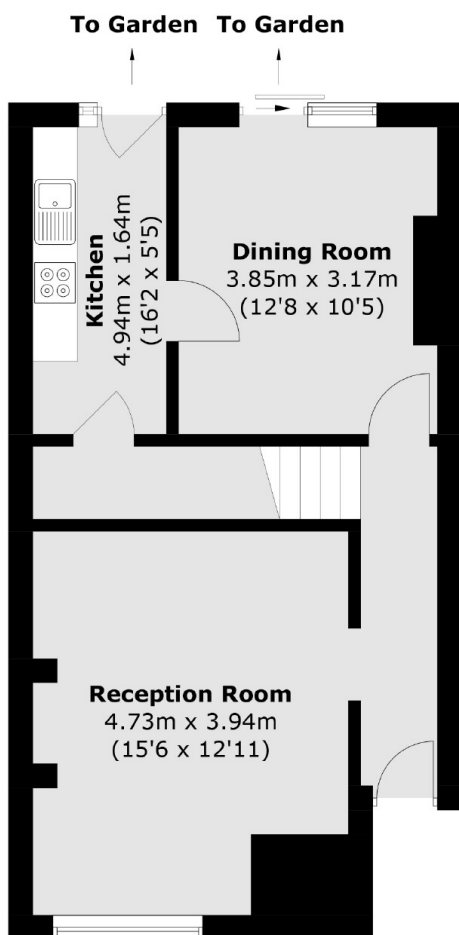
A charming freehold home set in the heart of Tooting with an abundance of scope and potential for extending & alterations STPP with a larger than average garden. Accommodation includes three bedrooms, a spacious front reception room, a separate kitchen and comfortable dining room. Offered to the market chain free, this is a great opportunity for an incoming purchaser.

Longmead Road is conveniently located for the many shops, bars and restaurants of central Tooting with the variety of shops, bars and restaurants on the doorstep. The excellent transport links of Tooting Broadway Underground station and the vast bus links are a stones throw away.

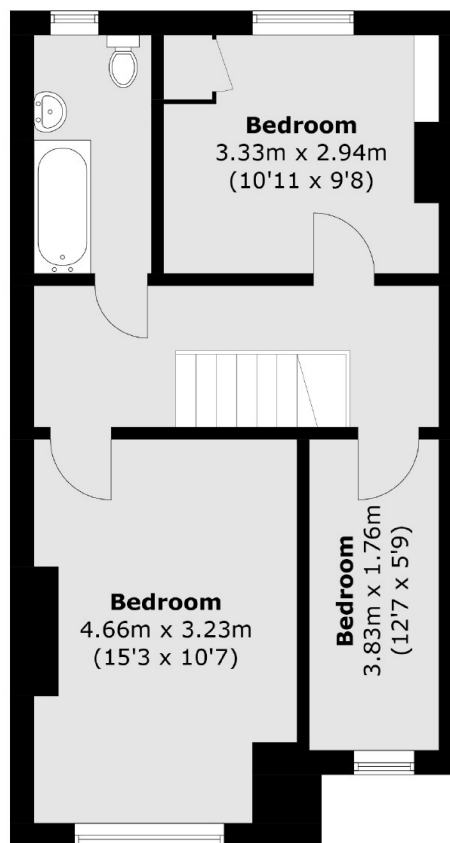
Features

- Three Bedrooms
- Chain Free
- Large Garden
- Potential to Extend (STPP)
- Blank Canvas
- Freehold Home

Longmead Road, London, SW17



Ground Floor



First Floor

Total area (approx.): 92.8 sq. m (998.8 sq. ft)