



Khartoum Road, SW17

£500,000

A beautifully presented and immaculate upper maisonette set on the first floor of a handsome Victorian building occupying a generous plot with a spacious front reception room, two double bedrooms, an eat-in kitchen and a stylish three piece family bathroom. The property retains a superb rear garden with western facing views and is sold chain free.

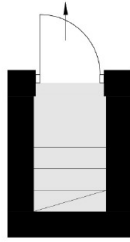
Khartoum Road is a quiet tree lined residential street moments away from central Tooting with a vast array of shops, bars and restaurants within walking distance. Easy access to the City can be found via Tooting Broadway Underground station which is a short stroll away.

Features

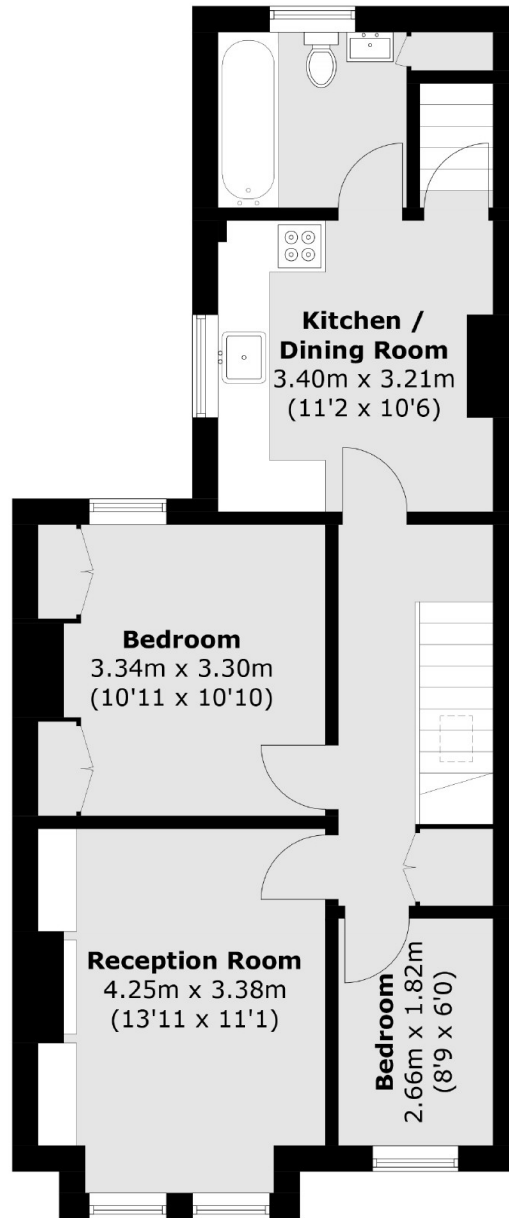
- Two Double Bedrooms
- Chain Free
- Upper Maisonette
- Loft Extension Potential (STPP & Demise)
- Private Garden
- Eat-In Kitchen

Khartoum Road, London, SW17

To Garden



Ground Floor



Ground Floor

First Floor

Total area (approx.): 62.0 sq. m (667.4 sq. ft)