



Himley Road, SW17

£450,000

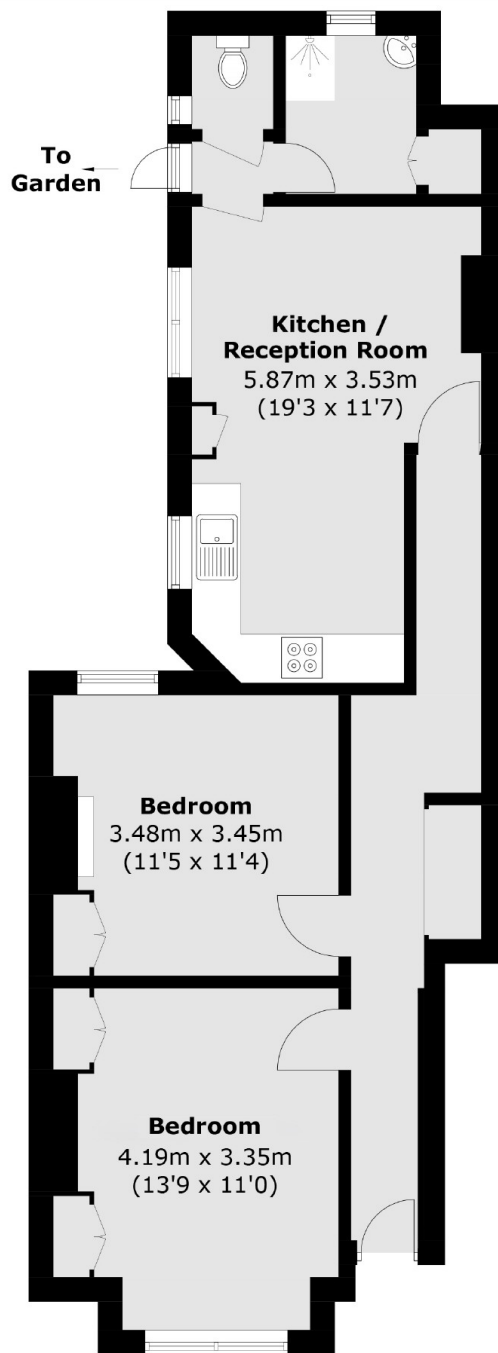
A spacious two double bedroom ground floor maisonette offered to the market chain free with excellent proportions throughout. The property offers two spacious double bedrooms, an open-plan kitchen/reception room and a three piece family bathroom. The property retains a large south facing garden at the rear.

Himley Road is at heart of the Graveney grid with excellent access to the vast shops, restaurants and amenities of central Tooting and it's excellent transport of Tooting Broadway Tube station only walking distance away. Ofsted outstanding schools are also within a short walk away.

Features

- Two Double Bedrooms
- Private Garden
- New Lease
- Chain Free
- Open-Plan Kitchen/Reception Room

Himley Road, London, SW17



Ground Floor

Total area (approx.): 63.3 sq. m (681.4 sq. ft)

Dexters

Tooting
48 Tooting High Street
London
SW17 0RG
Sales
020 8545 8582

Energy Rating: C. We aim to make our particulars both accurate and reliable. However they are not guaranteed; nor do they form part of an offer or contract. If you require clarification on any points then please contact us, especially if you're traveling some distance to view. Please note that appliances and heating systems have not been tested and therefore no warranties can be given as to their good working order.

 **RICS** | Regulated
Estate Agent
and Letting Agent

[dexters.co.uk](https://www.dexters.co.uk)