



Carlingford Gardens, CR4 £445,000

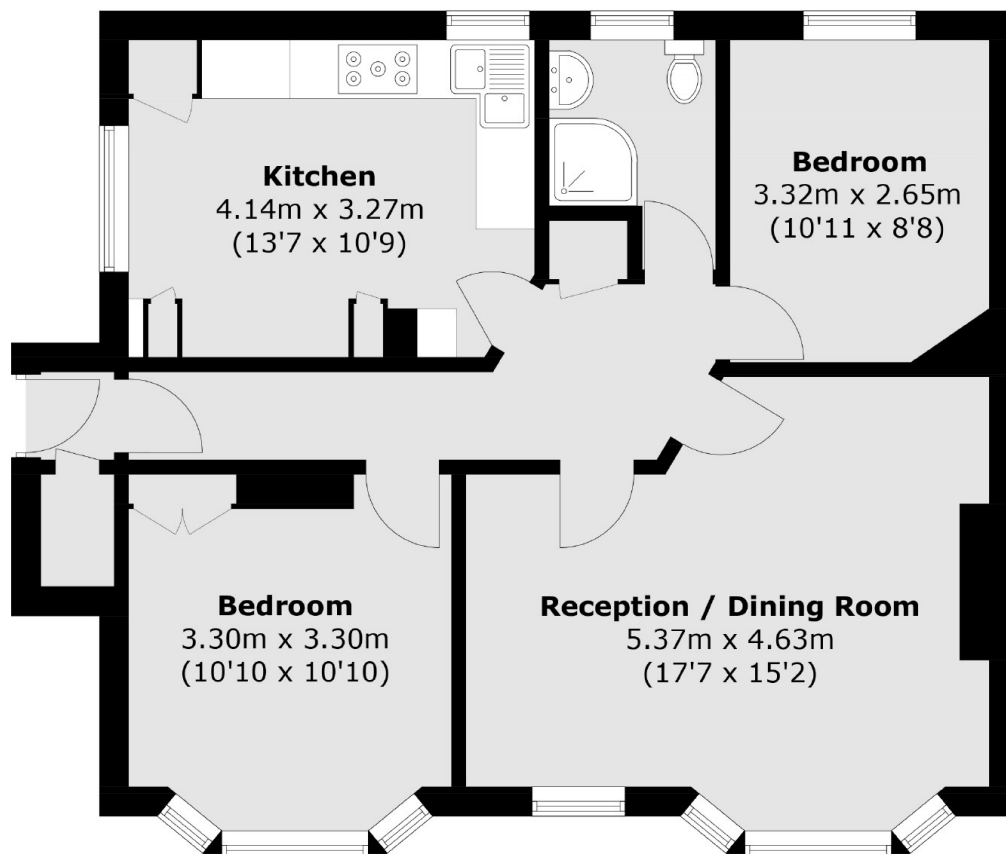
A larger than average ground floor maisonette extending to just shy of 800 sqft comprising a large reception room with a comfortable seating & dining area, two generous double bedrooms and a stylish three piece bathroom. The property retains a generous plot and a share of the freehold, with wonderful views over Figges Marsh.

Carlingford Gardens is beautifully positioned for the wide open spaces of Figges Marsh and is in excellent proximity to the vast transport links of Tooting Railway Station and variety of shops, bars and amenities of central Tooting.

Features

- Two Double Bedrooms
- Scope for Alterations
- Undisturbed Views
- Large Stylish Kitchen
- Own Front Door
- Desirable Location

Carlingford Gardens, Mitcham, CR4



Total area (approx.): 71.3 sq. m (767.5 sq. ft)