



Himley Road, SW17

£519,950

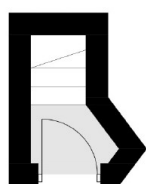
A charming period apartment set over the first floor of this handsome Victorian building with great accommodation throughout. The property retains bedrooms, a large open-plan kitchen/reception room and a three piece family bathroom, with further scope for a loft extension (STPP).

Himley Road is at heart of the Graveney grid with excellent access to the vast shops, restaurants and amenities of central Tooting and it's excellent transport of Tooting Broadway Tube station only walking distance away. Ofsted outstanding schools are also within a short walk away.

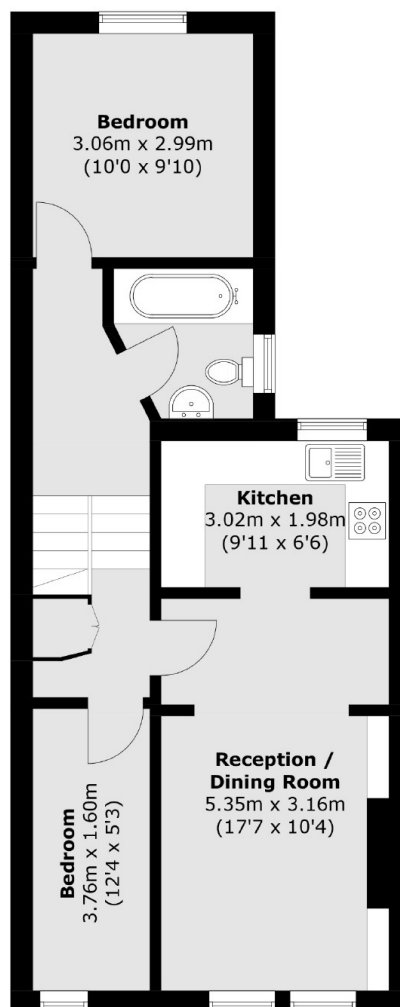
Features

- Two Bedrooms
- First Floor
- Share of Freehold
- Period Building
- Desirable Location
- Loft Extension Potential (STPP)
- Chain Free

Himley Road, London, SW17



Ground Floor



First Floor

Total area (approx.): 54.6 sq. m (587.7 sq. ft)