



Salterford Road, SW17

£440,000

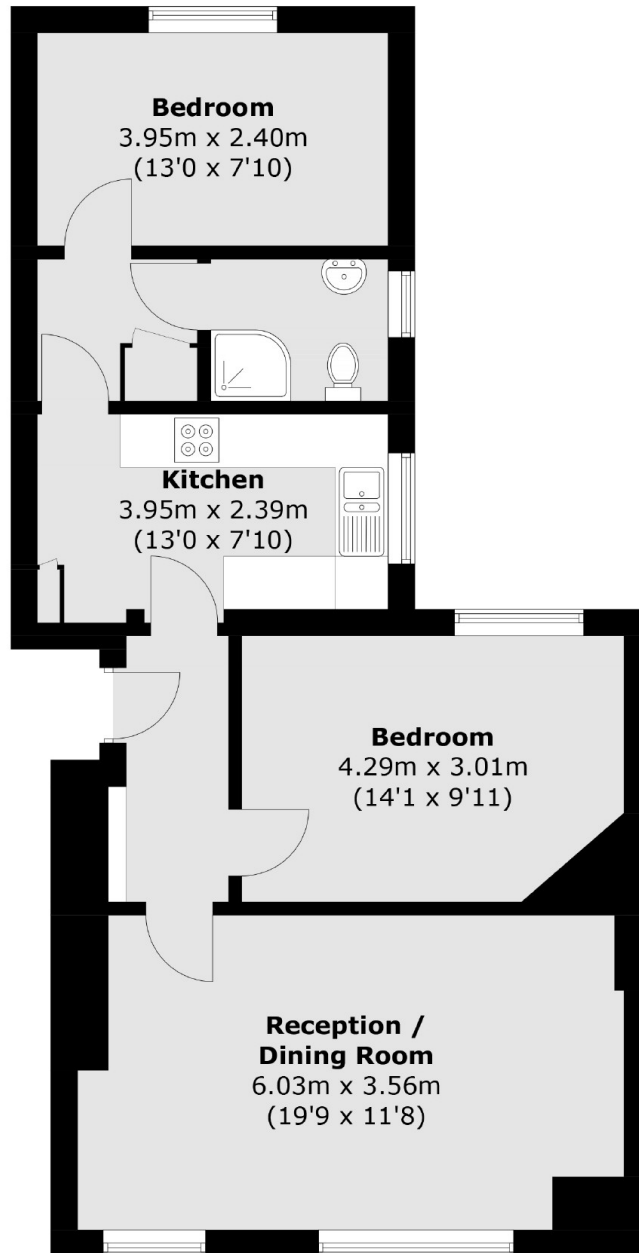
A charming first floor maisonette extending to over 700 sqft of excellent living space in Furzedown Village. Accommodation includes two spacious bedrooms, a large reception room, separate kitchen and three piece family bathroom. The property is a blank canvas and offers ideal scope for any incoming purchaser to modernise.

Salterford Road is a quiet residential street on the doorstep of Furzedown Village with excellent access to the many shops, bars and restaurants of central Tooting and it's convenient transport links into the City.

Features

- Two Bedrooms
- Own Front Door
- Chain Free
- Over 700 sqft
- Furzedown Village
- Blank Canvas

Salterford Road, London, SW17



Total area (approx.): 66.0 sq. m (710.4 sq. ft)