



Rectory Lane, SW17

£3,800 Per calendar month

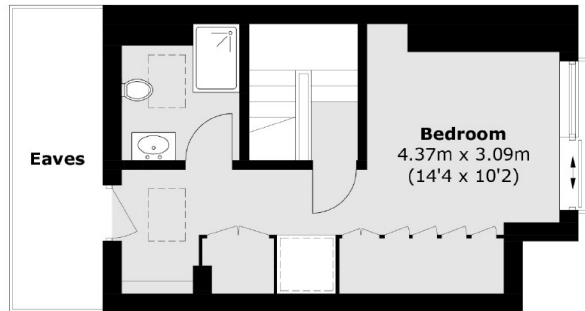
A period property presented in immaculate condition throughout. Split over three levels offering spacious rooms with high ceilings, this property benefits from a separate reception room, four bedrooms, two bathrooms and a private garden. An ideal property for a family or professional sharers.

Rectory Lane, a highly desirable residential street within walking distance of the boutique shops and cafés of Moyser Road and sits within proximity of the outstanding Graveney School. The vast green spaces of Tooting Bec Common and transport links of Tooting Broadway Underground and Streatham Common Overground are also nearby.

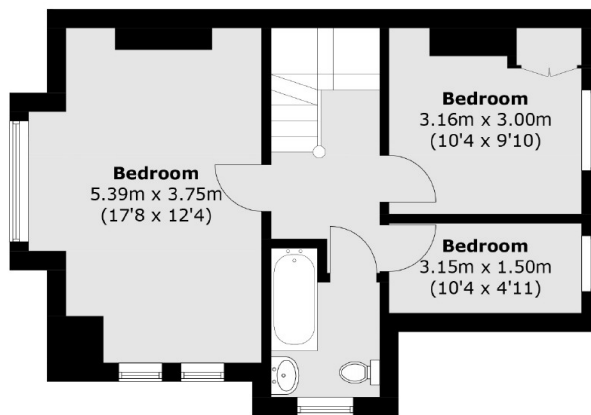
Features

- Period House
- Four Bedrooms
- Separate Living Room
- Modern Kitchen
- Two Bathrooms
- Modern Interior

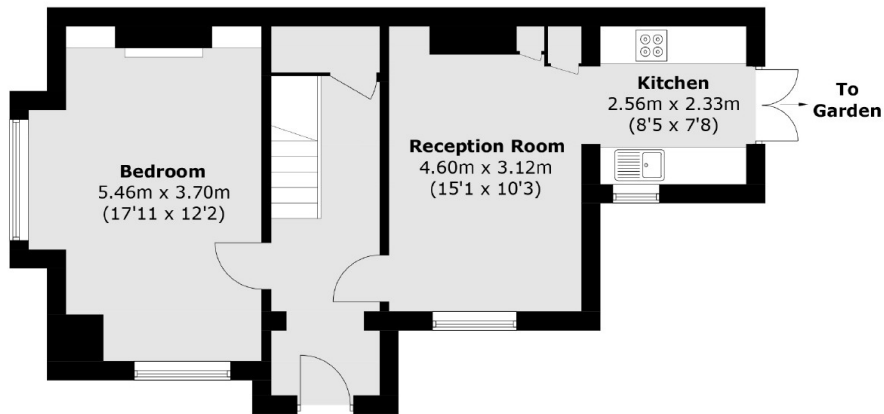
Rectory Lane, London, SW17



Second Floor



First Floor



Ground Floor

Total area (approx.): 126.0 sq. m (1,356.2 sq. ft)
(Excluding Eaves)