



Trevelyan Road, SW17

£599,950

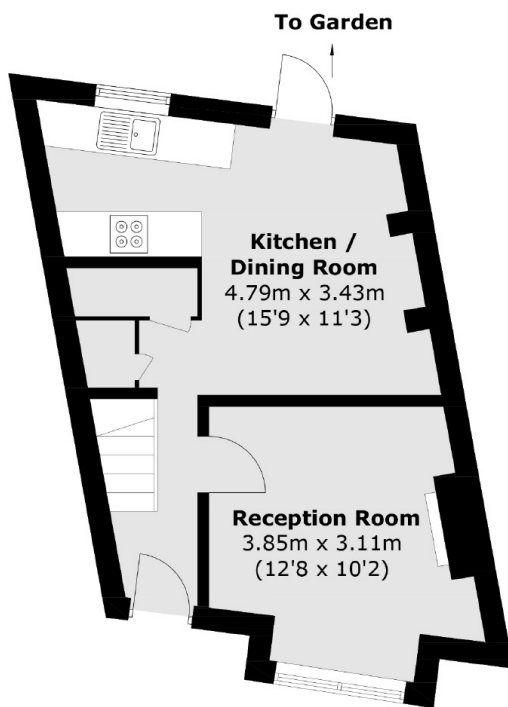
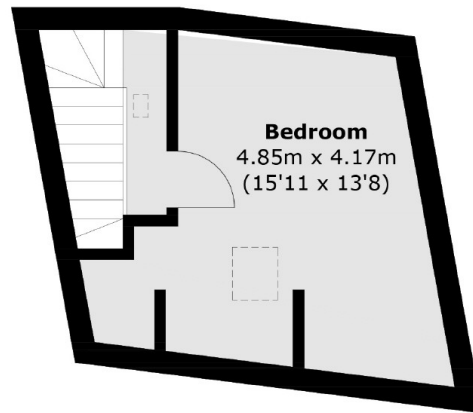
A blank canvas of a home in central Tooting with an abundance of scope and opportunity for further alterations and extending (STPP). The property opens onto a front reception room and retains a open-plan kitchen/dining room at the rear with a private garden. There are three bedrooms and a family bathroom over the first and top floors. The property is sold chain free.

Trevelyan Road is a quiet tree lined residential street with a vast array of boutiques, shops, bars and restaurants on the doorstep. The wide transport links of Tooting Broadway Underground and Tooting Railway stations are also within walking distance.

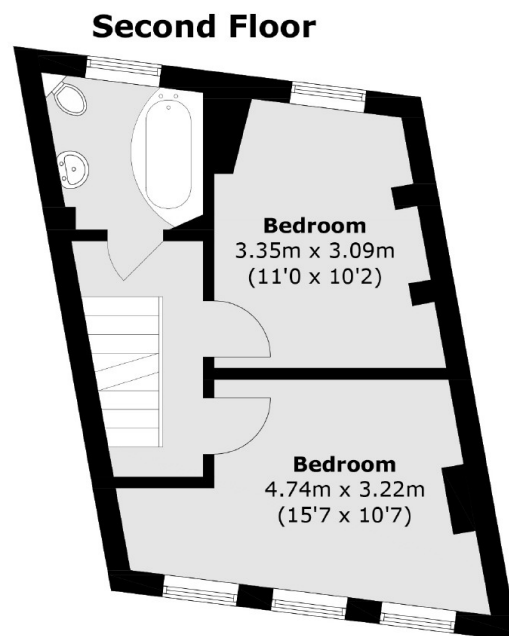
Features

- Three Bedrooms
- Freehold House
- Potential to Extend (STPP)
- Chain Free
- Blank Canvas
- Desirable Location

Trevelyan Road, London, SW17



Ground Floor



First Floor

Total area (approx.): 84.9 sq. m (913.8 sq. ft)