



Lessingham Avenue, SW17

£700,000

Dexters



Lessingham Avenue, SW17

A truly rare example of a freehold cottage house in the Totterdown Conversation area with generous proportions extending to 813 sqft with immaculate internals, three bedrooms, a large garden and home office.

With a charming yet handsome exterior, the property welcome you in via a superb 22 ft' open plan kitchen/reception room that is wonderfully balanced with a comfortable seating and dining area beautifully balanced with plantation shutters, a wood burning stove, original floors and bespoke shelving. To the rear of the house, there is a stylish yet practical kitchen with a variety of wall and base units, solid worktops, integrated appliances and a breakfast bar with ample space for dining and hosting.

The property retains a generous landscaped garden plot with a Home Office at the rear. Over the first and top floors, there are three bedrooms and two bathrooms with the principal bedroom balanced with an en-suite.

Lessingham Avenue is a quiet tree lined residential street nestled moments away from the green open spaces of Tooting Bec Common and the many shops, bars and restaurants of Tooting High Street with easy access to bus links and both Tooting Bec & Broadway Underground stations.

Features

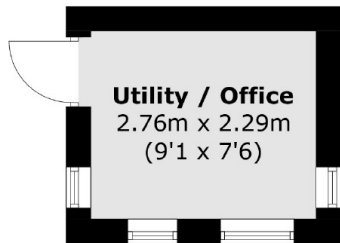
- Three Bedrooms
- Period Features
- Home Office
- Large Garden
- Desirable Location
- Tooting Bec Common



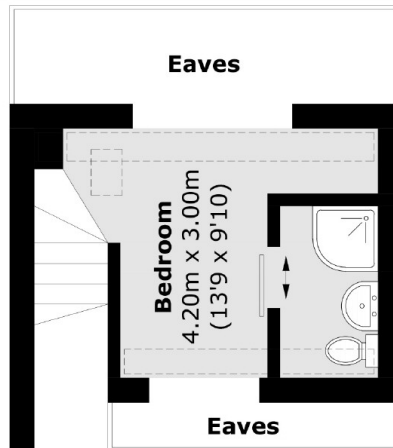




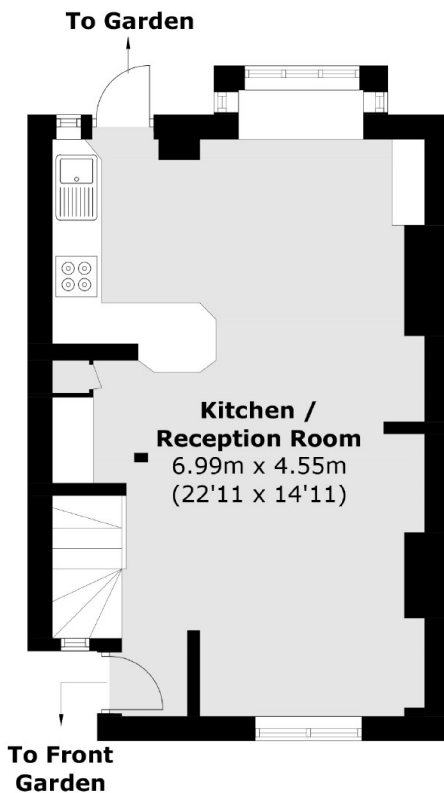
Lessingham Avenue, London, SW17



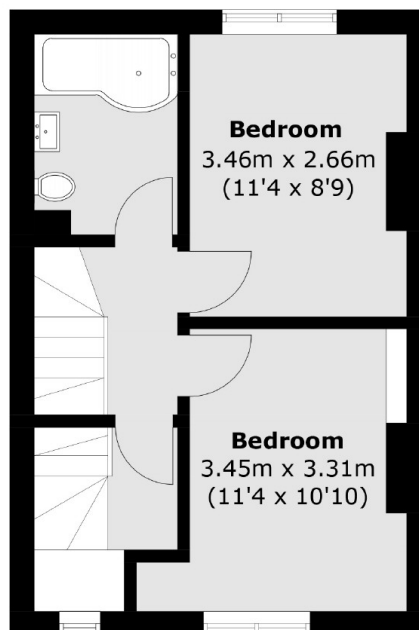
(Not Shown In Actual
Location / Orientation)



Second Floor



Ground Floor



First Floor

Total area (approx.): 75.6 sq. m (813.8 sq. ft)
Utility / Office : 6.4 sq. m (68.9 sq. ft)
(Excluding Eaves)