



## Moffat Road, SW17

£525,000

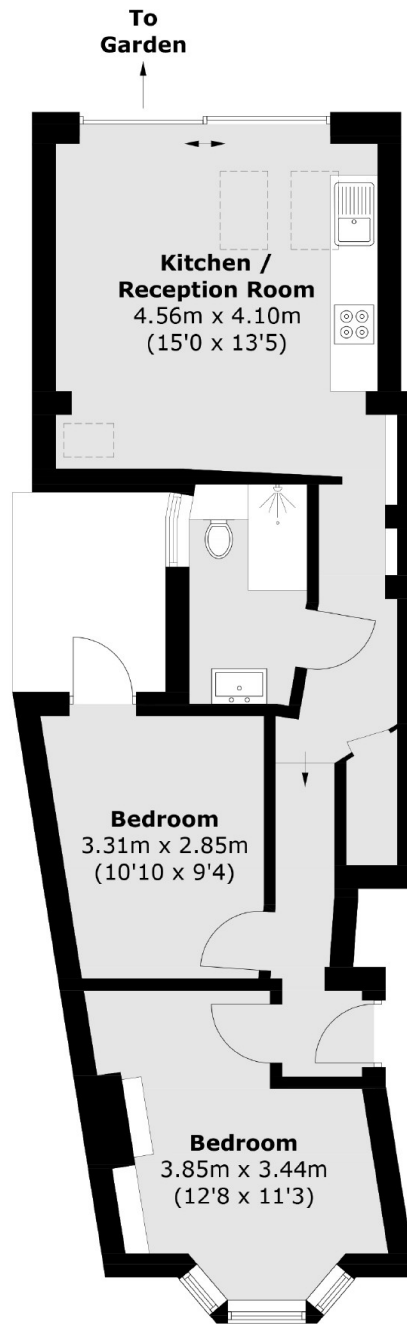
A truly stunning and lovingly maintained two double bedroom ground floor flat in exacting condition throughout with a fantastic position moments away from central Tooting. The property retains two double bedrooms, a three piece family bathroom and a superb open-plan kitchen/reception room with a stylish kitchen/dining area complimented by sliding doors opening onto a south facing garden.

Moffat Road is enviably located moments from Tooting High Street with the many shops, bars, eateries of Tooting Market on the doorstep. The vast bus links and easy access to the City are also a short stroll away via Tooting Broadway Underground Station.

### Features

- Two Double Bedrooms
- Chain Free
- Large Garden
- Open-Plan Kitchen/Reception Room
- Desirable Location
- Sliding Doors

# Moffat Road, London, SW17



## Ground Floor

Total area (approx.): 52.5 sq. m (565.1 sq. ft)