



Okeburn Road, SW17

£369,950

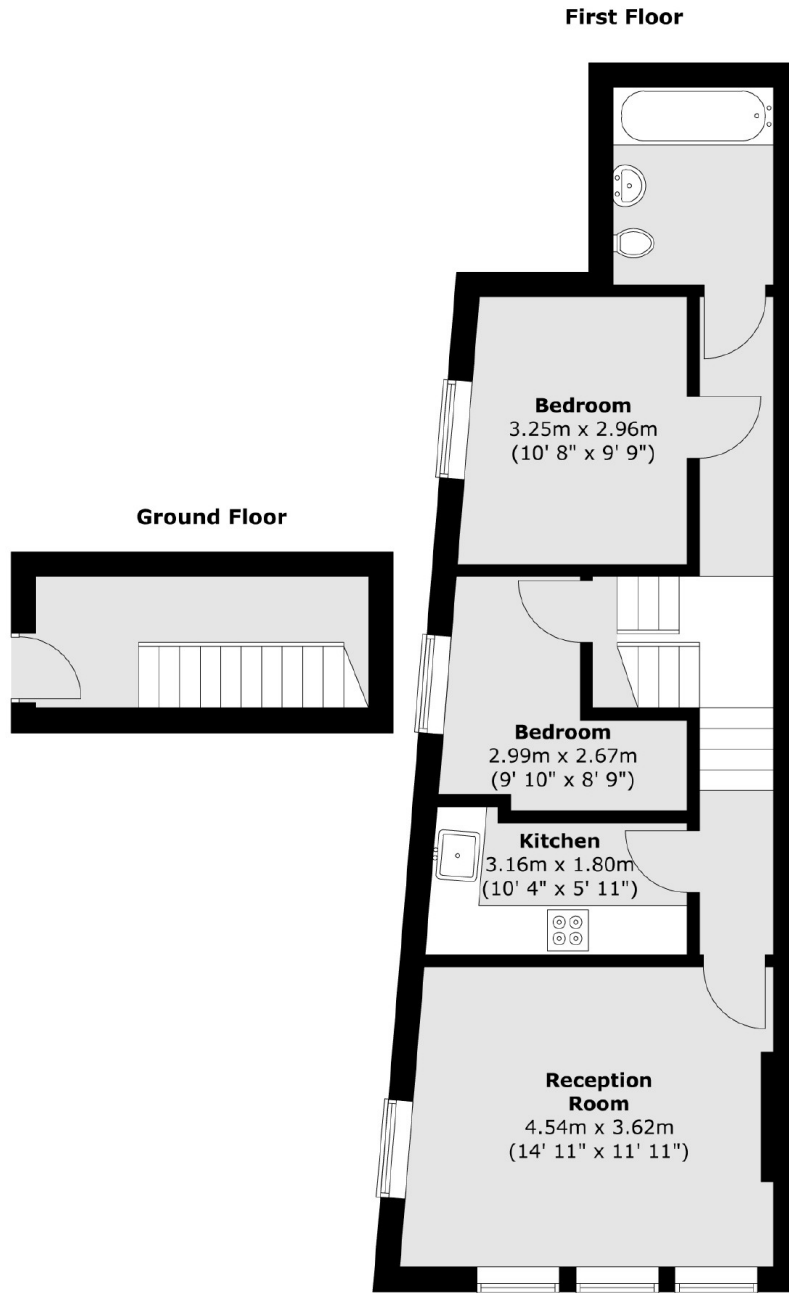
A rarely available two bedroom maisonette nestled in central Tooting extending to 641 sq'ft offering superb scope for further modernisation and alterations throughout. Accommodation includes a generous front reception room with a fireplace, an eat-in kitchen, two spacious double bedrooms and a three piece bathroom. The property also retains a long lease.

Okeburn Street is a quiet tree lined residential street located moments away from the vast amenities of Tooting Broadway and wide green open spaces of Tooting Bec Common. The excellent transport links of Tooting Railway and Tooting Broadway Underground stations are also within walking distance.

Features

- Two Bedrooms
- Chain Free
- Long Lease
- Scope for Modernisation
- Period Features
- Split Level

Okeburn Road, London, SW17



Total area (approx.) : 59.6 sq. m (641 sq. ft)