



Bruce Road, CR4

£769,950

Dexters



Bruce Road, CR4

A truly stunning family home that has been meticulously refurbished and extended by the current owners to exceptional detail throughout benefitting from three bedrooms, a large garden and home office.

With a spacious and inviting hallway, the property opens onto a comfortable front reception room that has been thoughtfully furnished with an original fireplace, plantation shutters and original wooden floors. The heart of the home lies at the rear with a superb 19' ft kitchen/dining room that has thoughtfully been laid out to include a vast array of wall and base units, integrated appliances, solid worktops, a breakfast island and a practical utility room. Solid herringbone flooring and Crittal style doors provide great access onto a landscaped rear garden that also offers an outdoor home office.

Over the first floor, the property is proportionately laid out to include three bedrooms and a stylish three piece family bathroom with an abundance of space for further extension potential in the loft (STPP).

Bruce Road is conveniently located for the many shops, bars and restaurants of central Tooting with both Tooting Railway and Tooting Broadway Underground stations within walking distance. The green open spaces of Figges Marsh are also nearby.

Features

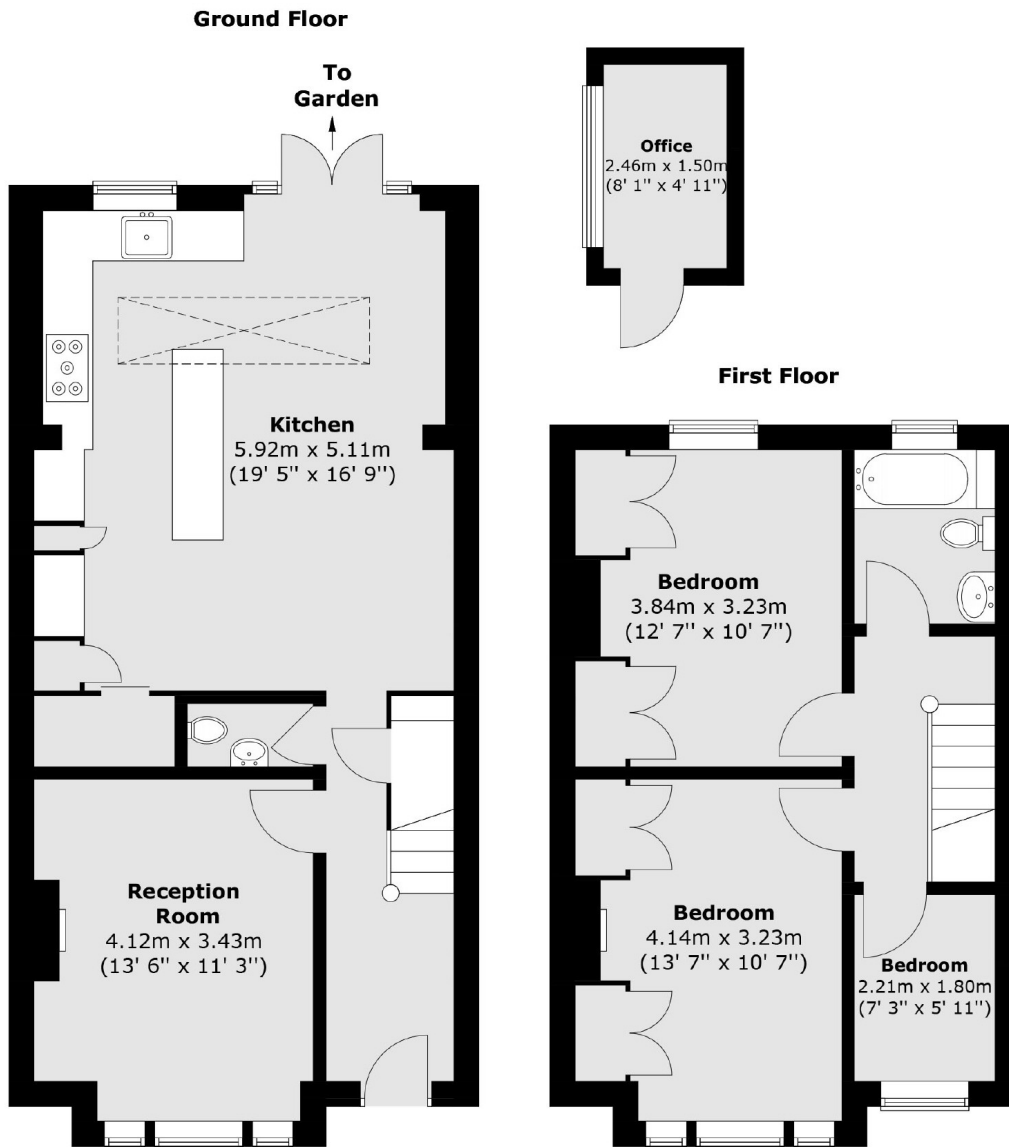
- Stunning Home
- Stylish Integrated Kitchen
- Utility Room
- Period Features
- Home Office
- Extended Kitchen/Dining Room







Bruce Road, Mitcham, CR4



Total area (approx.) : 95.3 sq. m (1026 sq. ft)
Total office area (approx.) : 3.7 sq. m (40 sq. ft)