



Moring Road, SW17

£680,000

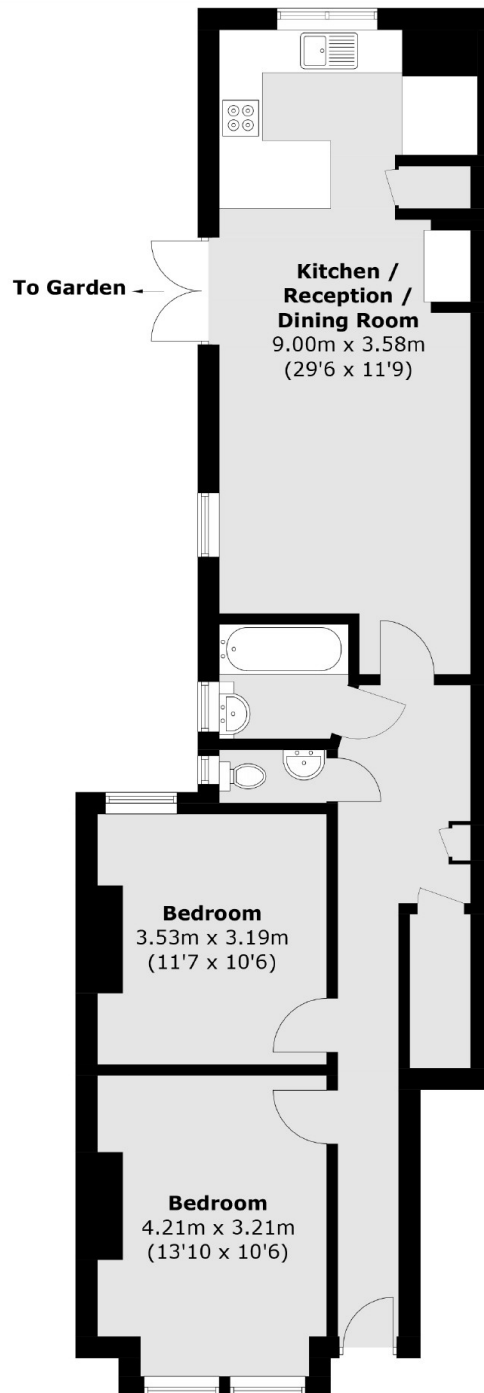
A truly impressive two double bedroom ground floor maisonette in superb condition throughout in a highly sought after road in Tooting. The property retains a superb open-plan kitchen/reception with a stylish eat-in kitchen with integrated appliances and solid worktops, a comfortable dining and seating area with doors leading onto a private south facing garden.

Moring Road represents a close knit community of homes with excellent proximity to Balham and Tooting Bec town centres with the vast shops, bars and amenities of Tooting Broadway also close by. The green open spaces of Tooting Bec Common and Underground station are also within walking distance.

Features

- Two Double Bedrooms
- Own Front Door
- South Facing Garden
- Excellent Condition
- Period Features
- Desirable Location

Moring Road, London, SW17



Total area (approx.): 74.3 sq. m (799.8 sq. ft)