



Lavender Grove, CR4

£425,000

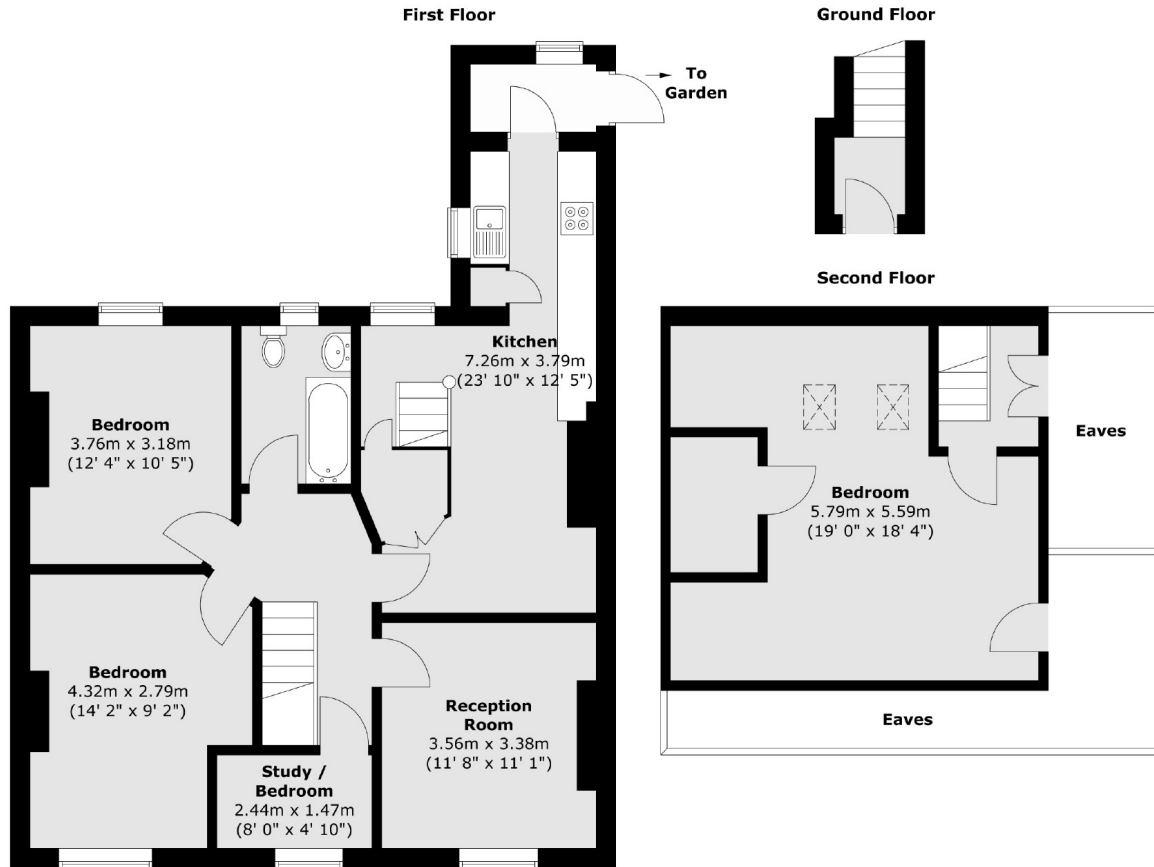
A larger than average and lovingly maintained split level upper maisonette that extends to approx 1227 sqft with accommodation comprising of four bedrooms, a large and recently refurbished kitchen with a comfortable dining area, a spacious garden and a generous front reception room. The property retains a large plot and is a rare find.

Lavender Grove is a quiet residential road with excellent proximity to the many shops and amenities of both Colliers Wood and Tooting Town centres, with the fantastic transport links of Colliers Wood Tube, Mitcham Eastfields Railway & Tooting Railway stations equidistant.

Features

- Four Bedrooms
- Large Garden
- Split Level
- Further Scope for Potential (STPP)
- Own Front Door
- Stylish Kitchen

Lavender Grove, Mitcham, CR4



Total area (approx.) : 114 sq. m (1227 sq. ft)
(Excluding Eaves)