



Hoyle Road, SW17

£625,000

A superb and exceptional example of a split level apartment set over the first floor of this handsome period building with accommodation that extends to 854 sqft comprising two double bedrooms, a stylish reception room, two bathrooms and a contemporary kitchen.

Hoyle Road is conveniently located for Tooting Broadway and it's variety of shops, bars and restaurants on the doorstep with excellent bus links and Tooting Broadway Underground station within walking distance.

Features

- Two Double Bedrooms
- Two Bathrooms
- Split Level
- 854 sqft
- Potential to Extend (STPP)
- Desirable Location
- Period Building



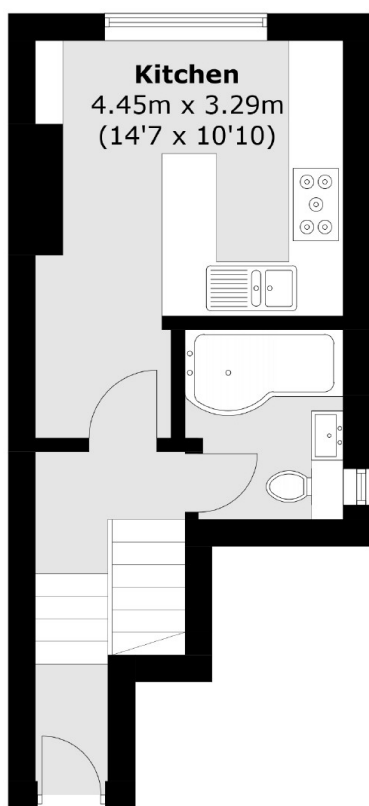
Hoyle Road, SW17

Opening onto a wide and spacious landing, the property benefits from a modern yet stylish integral kitchen with a vast array of wall and base units, integrated appliances and solid worktops. An exceptionally wide reception room makes for a superb living space having been furnished with bespoke cabinetry, recessed lighting, plantation shutters and wooden floors with a comfortable seating and dining area.

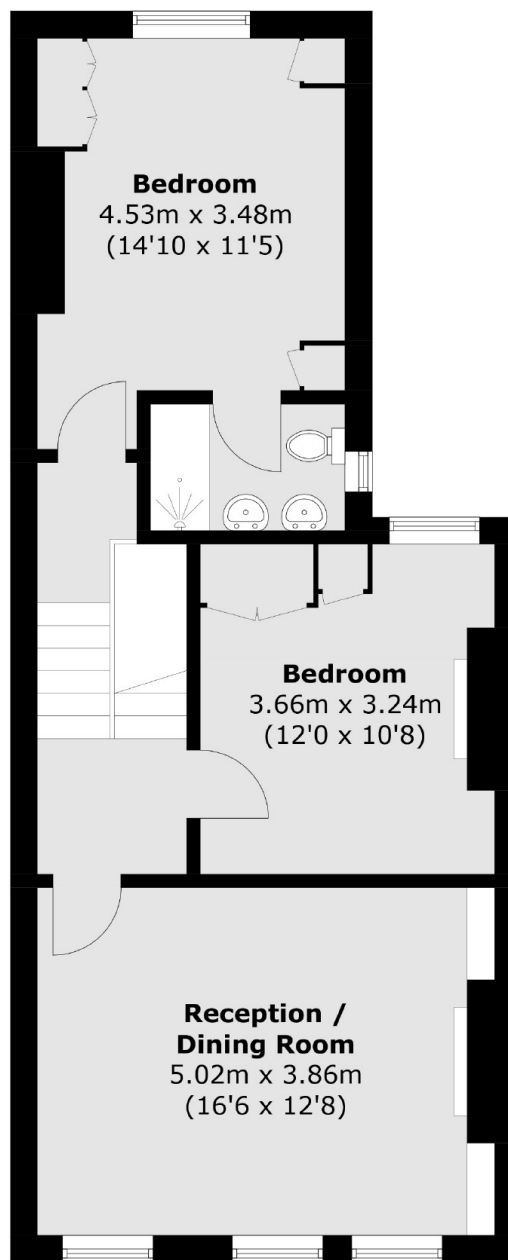
Over the first and top floors, there are two very spacious double bedrooms with the principal bedroom wonderfully complimented by built-in wardrobes and an en-suite bathroom. The property also retains a three piece family bathroom and further scope for extending via a demised loft (STPP).



Hoyle Road, London, SW17



Ground Floor



First Floor

Total area (approx.): 79.4 sq. m (854.6 sq. ft)