



Southercroft Road, SW17

£665,000

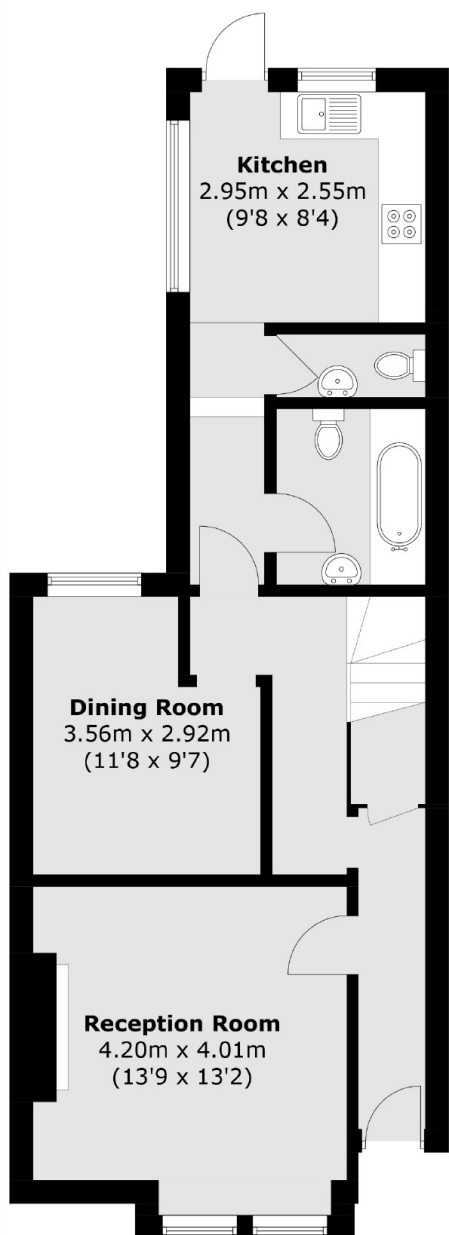
A sizeable and well presented three bedroom family home with an abundance of potential to extend (STPP), retaining three generous double bedrooms, a south facing garden, two reception rooms and a bright kitchen.

Southercroft Road is conveniently located for the many cafes, restaurants and bars of Mitcham Road and Furzedown Village and is beautifully complimented with a vast array of transport links with Tooting Overground and Tooting Broadway Underground Stations a short walk away.

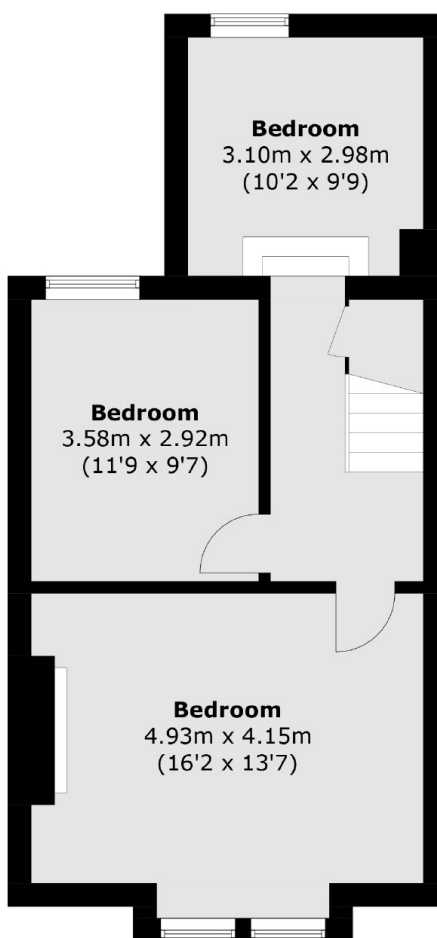
Features

- Three Double Bedrooms
- Potential to Extend (STPP)
- Blank Canvas
- Desirable Location
- South Facing Garden
- Two Reception Rooms

Southercroft Road, London, SW17



Ground Floor



First Floor

Total area (approx.): 105.5 sq. m (1,135.6 sq. ft)