



Heaton Road, CR4

£439,995

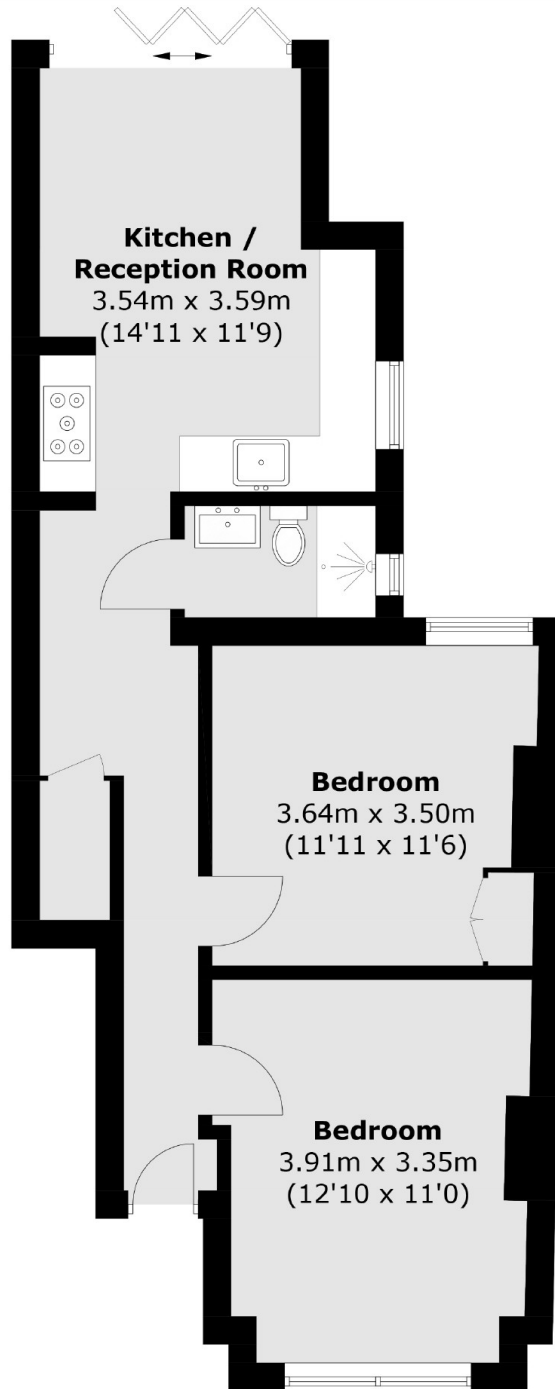
A delightful two double bedroom ground floor maisonette in exacting condition throughout having undergone extensive refurbishment by the current owner. The property retains two double bedrooms, an open plan kitchen/reception with a stylish integrated kitchen leading to a private garden and a three piece family bathroom.

Nestled just off the open spaces of Figges Marsh, Heaton Road is perfectly placed for the amenities of London Road and the frequent Thameslink rail services of Tooting mainline station.

Features

- Two Double Bedrooms
- Open-Plan Kitchen/Reception
- Private Garden
- Desirable Location
- Own Front Door
- Chain Free

Heaton Road, Mitcham, CR4



Total area (approx.): 55.2 sq. m (594.1 sq. ft)