



Undine Street, SW17

£635,000

A truly stunning example of a two double bedroom apartment set in the heart of Tooting in exemplary condition throughout having undergone extensive refurbishment with attention to detail by the current owners.

Undine Street is conveniently located for the vibrant bars, restaurants and boutiques of central Tooting with the excellent transport links of Tooting Broadway Underground station also nearby.

Features

- Two Double Bedrooms
- Excellent Apartment
- Own Front Door
- Share of Freehold
- Two Bathrooms
- Split Level



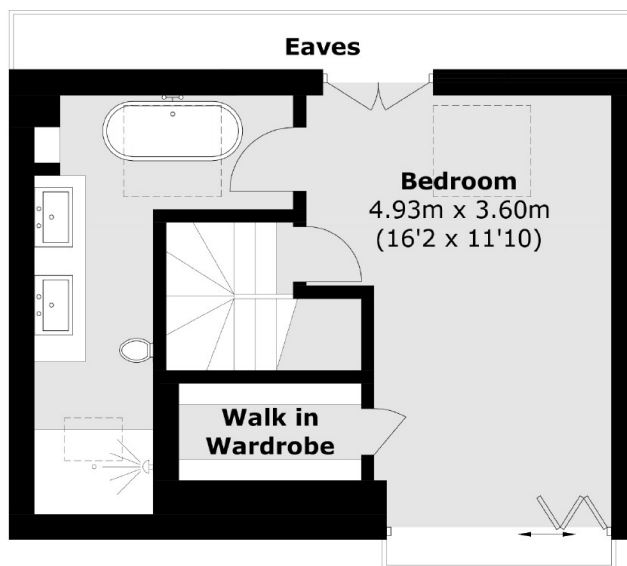
Undine Street, SW17

Set of the first floor of this handsome Victorian building, the property benefits from it's own front door & opens onto a stylish yet well thought out reception room furnished with recessed lighting, bespoke cabinetry and a comfortable dining area. Off the hall a stylish yet contemporary kitchen offers a vast array of wall and base units with integrated appliances and solid worktops. The first floor is further complimented by a family bathroom and a generous double bedroom with a walk in wardrobe.

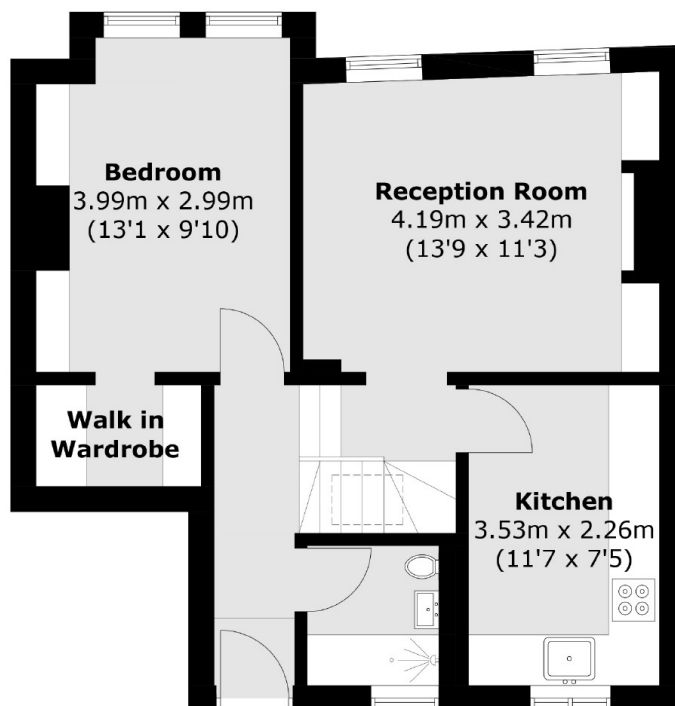
Over the top floor, the property retains a principal suite, complete with a walk-in wardrobe, his and hers four piece bathroom and bi-folding doors complemented by a Juliet balcony. With fitted storage and a larger than average footprint, there is a comfortable sleeping area.



Undine Street, London, SW17



Second Floor



First Floor

Total area (approx.): 82.1 sq. m (883.7 sq. ft)
(Excluding Eaves)