



## Idlecombe Road, SW17

£535,000

A truly impressive ground floor maisonette in superb condition throughout with a floorplan that spans just shy of 800 sqft, located moments away from central Tooting and Furzedown Village ideal for any incoming purchaser.

Idlecombe Road is quiet tree lined residential street nestled between the borders of Furzedown and central Tooting with easy access to shops, bars and restaurants locally. The transport links of Tooting Broadway Underground Station are a stone throws away.

### Features

- Two Double Bedrooms
- Private Garden
- Excellent Condition
- Furzedown Village
- Period Features
- Chain Free
- Long Lease



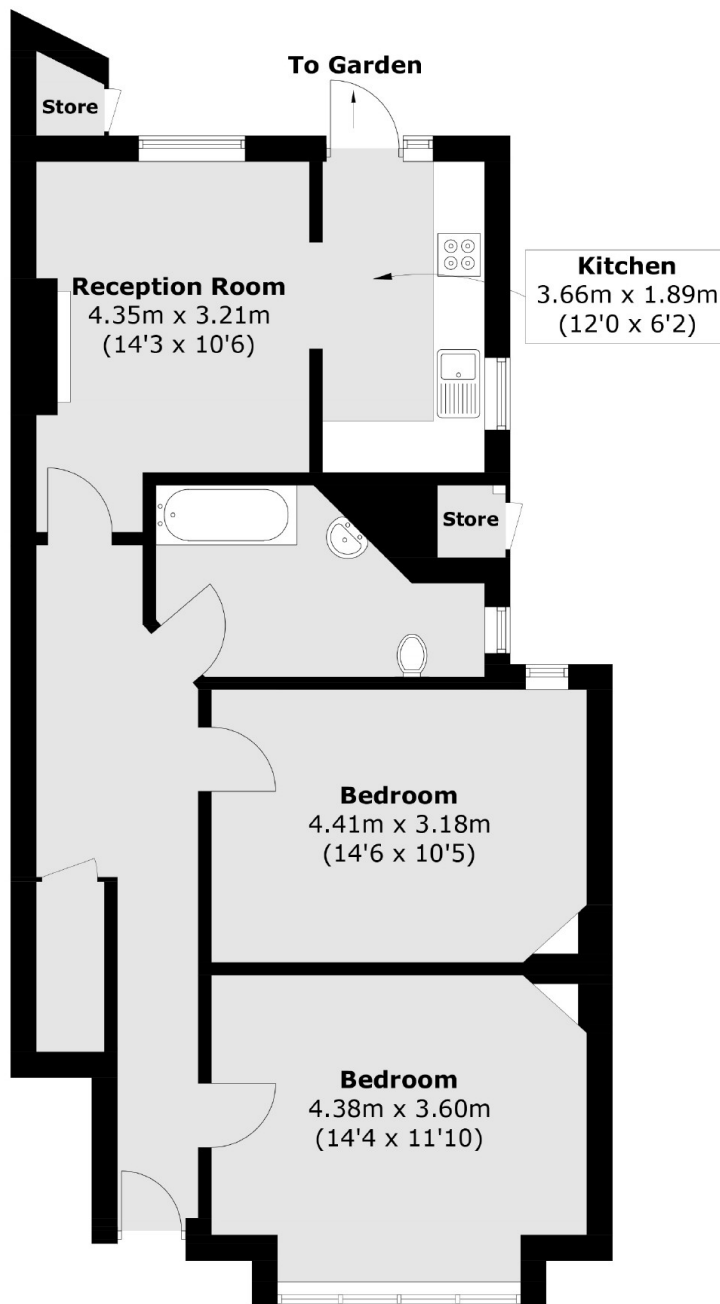
## Idlecombe Road, SW17

The property has been lovingly maintained by the current owners and welcomes you in via a spacious hallway and handsome exterior with accommodation comprising of a generous reception room with a period fireplace, a comfortable seating & dining area with through access to a modern & stylish kitchen with wall and base units and integrated appliances.

The property also offers two spacious double bedrooms, a three piece family bathroom and a private rear garden.



# Idlecombe Road, London, SW17



Total area (approx.): 71.5 sq. m (769.6 sq. ft)  
Outside Store: 1.3 sq. m (14.0 sq. ft)