



Selkirk Road, SW17

£700,000

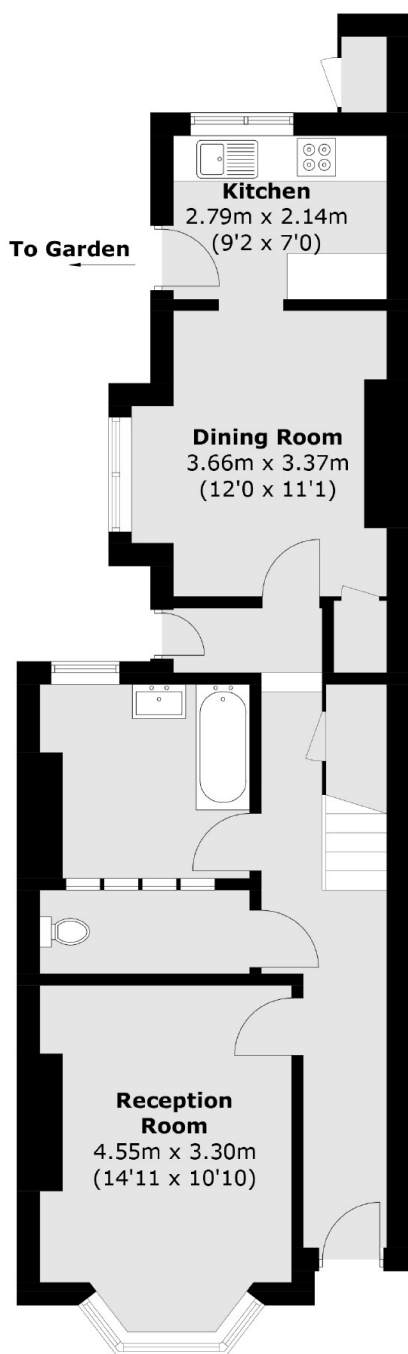
A superb example of an Edwardian home in the heart of Tooting retaining all of its original features with accommodation that extends to 1,152 sqft. The property retains a front reception room and downstairs bathroom, a dining area with a kitchen at the rear and three bedrooms over the first floor with an abundance of scope for further alterations and extensions (STPP).

Selkirk Road is conveniently located for the bustling shops, bars and amenities of central Tooting with the infamous Tooting Market also on the doorstep. Excellent transport links of Tooting Broadway Underground tube station is also within walking distance.

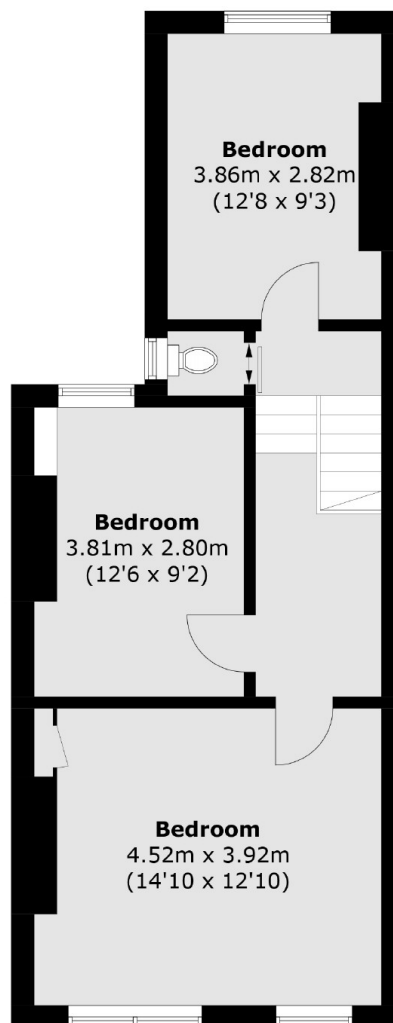
Features

- Three Bedrooms
- Potential to Extend (STPP)
- Blank Canvas
- Period Features
- Central Location
- Garden

Selkirk Road, London, SW17



Ground Floor



First Floor

Total area (approx.): 107.1 sq. m (1,152.7 sq. ft)
External Storage area (approx.): 0.6 sq. m (6.4 sq. ft)