



## Khama Road, SW17

£725,000

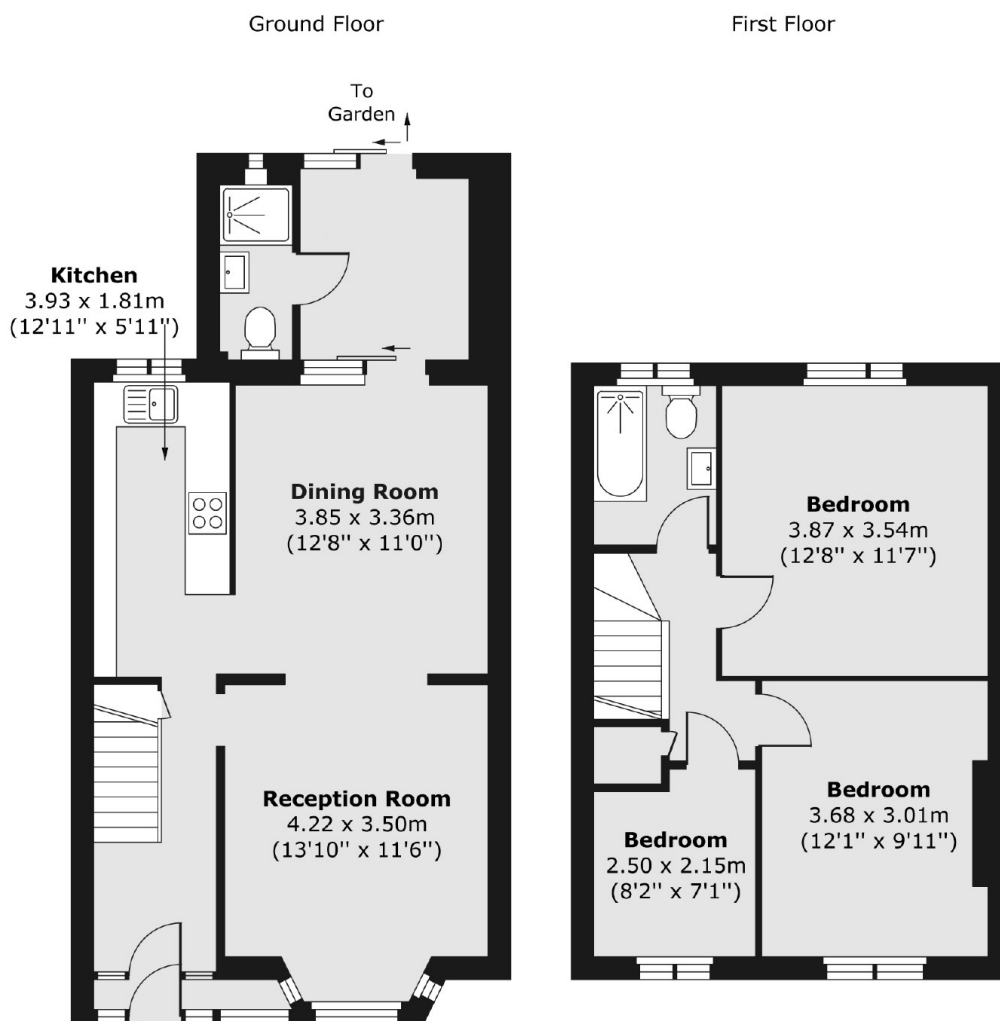
A delightful and lovingly maintained semi detached home in the heart of Tooting with accommodation that extends to just under 1000 sqft. Opening onto a generous through reception room, the property comprises a spacious dining room, separate kitchen, rear extension with a downstairs washroom, three bedrooms and a family bathroom.

Khama Road is a highly desirable residential street located moments away from the many shops, bars and restaurants of central Tooting with easy transport links of Tooting Broadway tube station a short stroll away.

### Features

- Semi Detached Home
- Large Garden
- Potential to Extend (STPP)
- Three Bedrooms
- Desirable Location
- Separate Kitchen

# Khama Road, London, SW17



Total area (approx.) 91.88 sq. m (989 sq. ft)