



Seely Road, SW17

£775,000

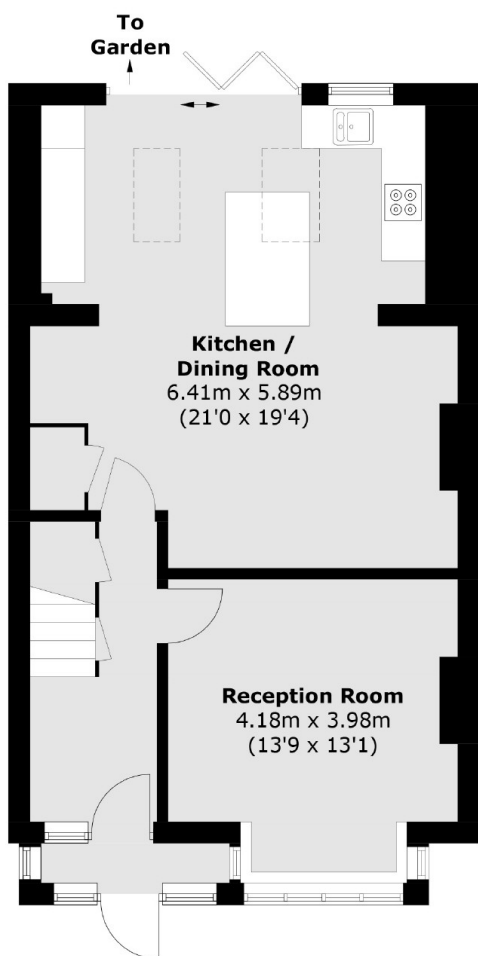
A charming and very well maintained four bedroom freehold home having undergone extensive refurbishment throughout. The property retains a generous front reception with a large eat in open plan kitchen/reception room with bifolding doors leading onto a large south facing garden. Over the first and top floors, the property retains four bedrooms and two bathrooms.

Seely Road is a desirable residential street occupying great proximity to central Tooting, Furzedown Village and within catchment for Graveney School. The vast shops, bars and restaurants of Tooting Broadway as well as excellent transport links of the Underground and Tooting Railway are within walking distance.

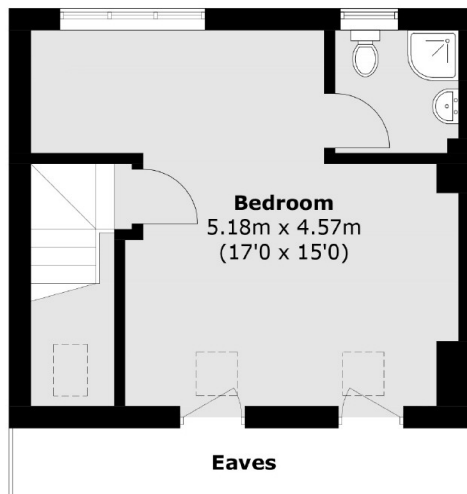
Features

- Four Bedrooms
- Extended Home
- Open-Plan Kitchen
- Bi-Folding Doors
- Residential Location
- Stylish Home

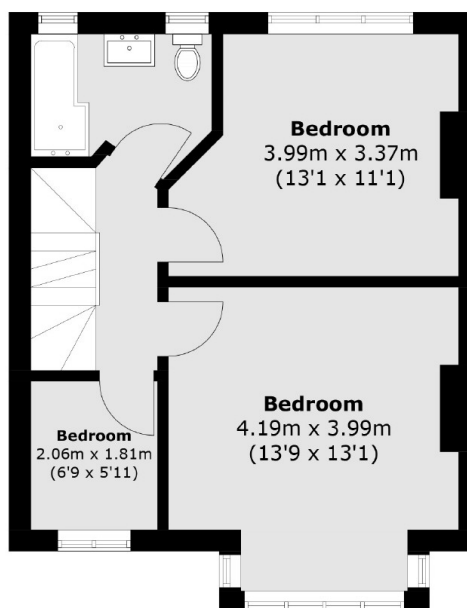
Seely Road, London, SW17



Ground Floor



Second Floor



First Floor

Total area (approx.): 134.7 sq. m (1,449.9 sq. ft)
(Excluding Eaves)