



## Khama Road, SW17

£525,000

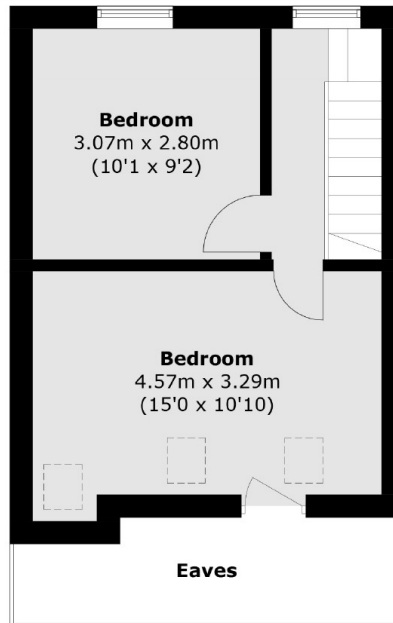
A spacious split level three double bedroom apartment in great condition throughout extending to over 700 sqft of living accommodation. The property sits over the first and top floors of this handsome period property and opens onto an open plan kitchen/reception room and comprises three bedrooms and a stylish three piece family bathroom. The property retains a share of freehold and is sold chain free.

Khama Road is a highly desirable residential street located moments away from the many shops, bars and restaurants of central Tooting with easy transport links of Tooting Broadway tube station a short stroll away.

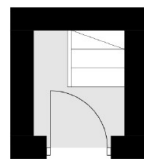
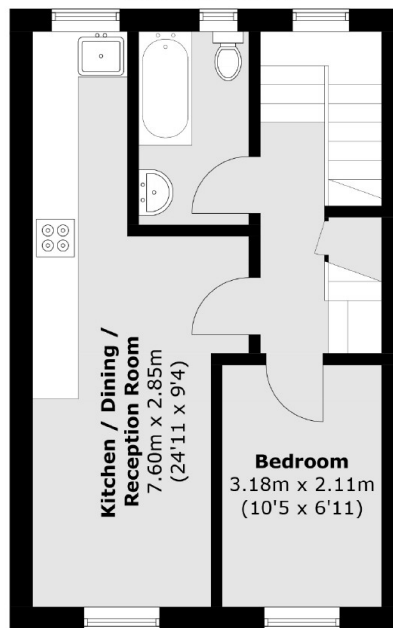
### Features

- Three Double Bedrooms
- Share of Freehold
- Split Level
- Open-Plan Kitchen/Reception
- Convenient Location
- Period Building

# Khama Road, London, SW17



## Second Floor



**Ground Floor**

**First Floor**

Total area (approx.): 65.5 sq. m (705.0 sq. ft)  
(Excluding Eaves)