



## Thrale Road, SW16

£375,000

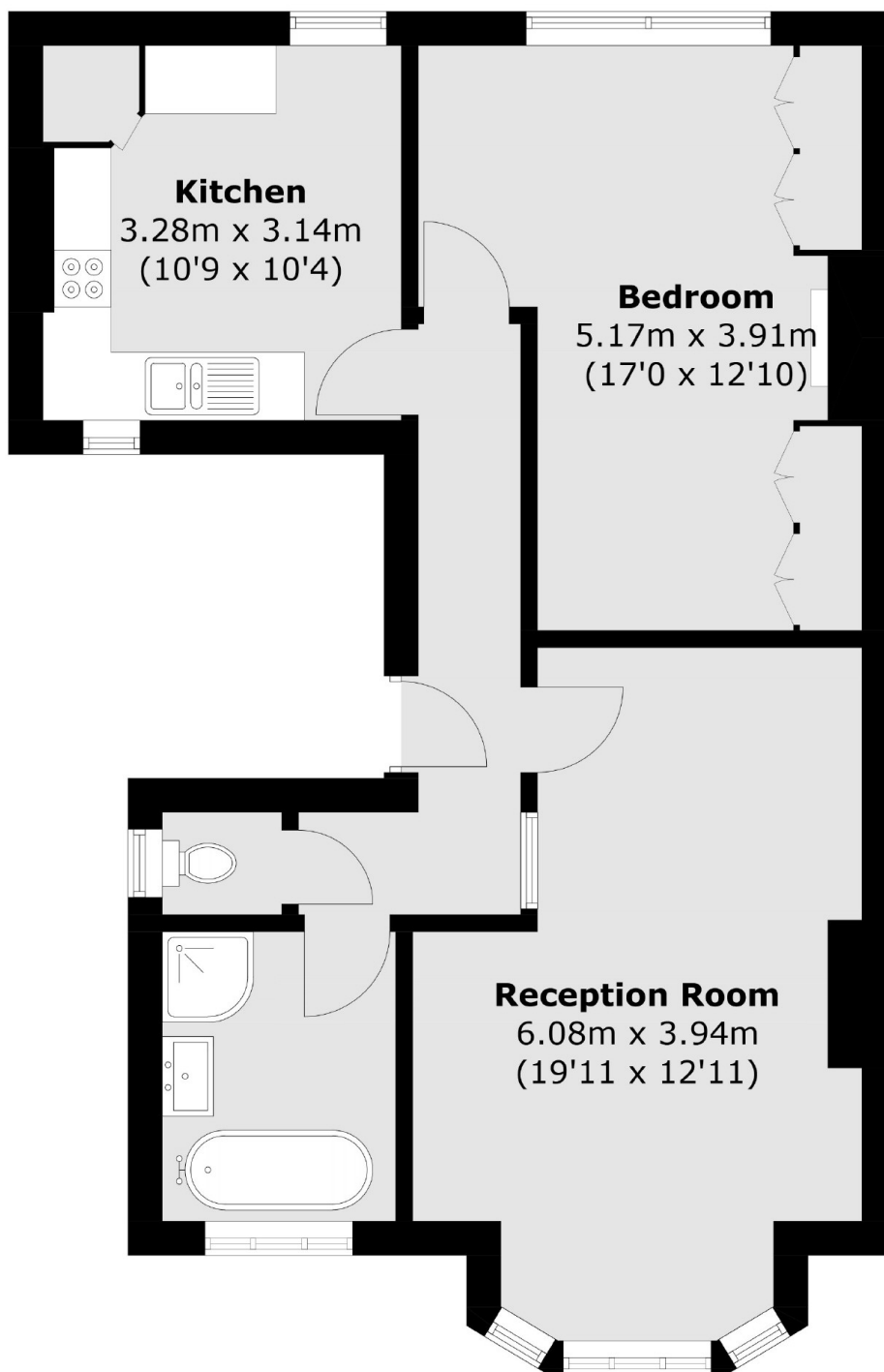
A remarkable one double bedroom apartment set over the first floor of this handsome Edwardian building, retaining all original features throughout and extending to 665 sqft. The property offers a superb reception room with wide proportions, an original fireplace and a comfortable seating area, a generous eat-in kitchen with ample worktop space, a three piece bathroom and a large double bedroom with storage and laminate floors.

Thrale Road is nestled away in the highly desirable Furzedown Village with the vast amenities, close knit community and shops and bars the area has to offer and with Tooting Bec Common a short walk away. Excellent transport links can be found via Tooting Bec or Tooting Broadway Underground and Streatham Overground stations.

### Features

- One Double Bedroom
- Furzedown Village
- Large Reception Room
- Period Features
- Share of Freehold
- Edwardian Building

# Thrale Road, London, SW16



Total area (approx.): 61.8 sq. m (665.2 sq. ft)