



## Christchurch Close, SW19

### £600,000

A substantial three bedroom freehold home requiring full modernisation with a generous plot, including a large garden with side access, a front garden and further potential to extend (STPP). The property is a total blank canvas and ideal for an incoming purchaser to create a family home.

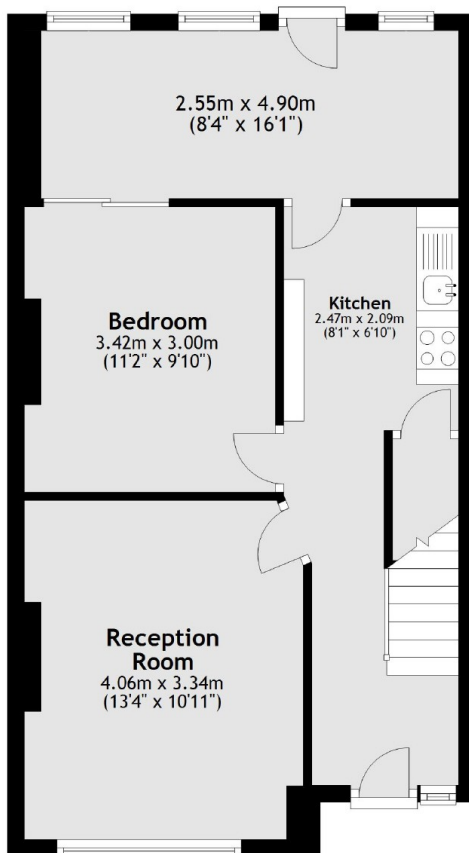
Christchurch Close is nestled away in the heart of Tooting and represents a close knit community of homes on a quiet cul de sac. The many shops, bars and transport amenities of Colliers Wood are within walking distance, with outstanding schools also nearby.

### Features

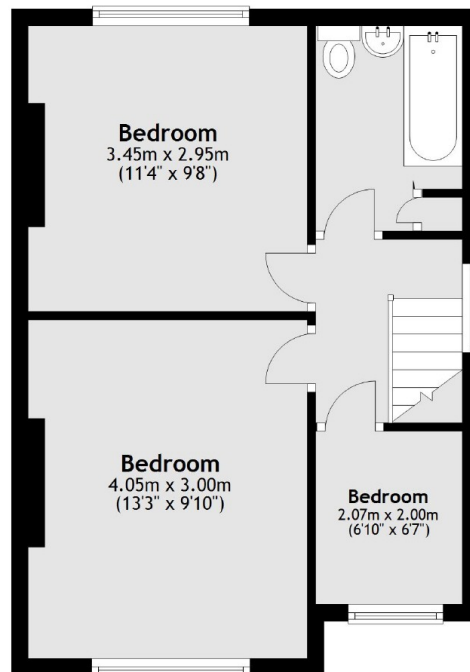
- Three Bedrooms
- Chain Free
- Requiring Modernisation
- Blank Canvas
- Potential to Extend (STPP)
- Large Garden

# Christchurch Close, London, SW19

Ground Floor



First Floor



Total area: approx. 87.2 sq. metres (938.5 sq. feet)