



BROOK GAMBLE



Manor Cottage, 2 Manor Way, Eastbourne, BN20 9BN

£599,950

Brook Gamble are delighted to offer to the market the rare opportunity to purchase this charming and substantial three bedroom property in the heart of the PRIVATE RATTON ESTATE. With attractive flint elevations, the ground floor accommodation boasts a wonderful 27' x 18' sitting room, a 15' x 15' dining room/study and further breakfast room; there is also a GROUND FLOOR SHOWER ROOM. The first floor comprises three bedrooms, bathroom and WC. With lovely communal gardens to the rear, and private flint walled gardens to the front and side, the property also benefits from a CAR PARKING SPACE and is being sold chain free. Sole Agents.

Wooden front door, with secondary glazed leaded light side screens, to:

Entrance Hall



Glazed display cupboard with shelving. Under stairs storage cupboard. Radiator. Parquet wood flooring.

Lounge 27'4" x 17'9" reducing to 15'9" (8.33m x 5.41m reducing to 4.80m)



Gas fire. Marble effect hearth and surround with wooden mantel over. Built-in cupboards. Picture rail. Three radiators. Secondary glazed window to front. Secondary glazed window overlooking communal garden. Glazed door giving access to communal garden.

Dining Room/Study 15'0" x 15'3" (4.57m x 4.65m)



Fireplace with marble effect hearth and surround and wooden mantle over. Built-in bookshelves. Glazed display cabinet. Picture rail. Radiator. Parquet wood flooring. Secondary glazed windows to front and side.

Shower Room



Glazed shower cubicle with wall mounted shower unit. Low level WC. Pedestal wash basin. Heated towel rail. Tiled walls. Roof light.

Breakfast Room 10'4" x 8'8" (3.15m x 2.64m)



Wooden work surface with space and plumbing for washing machine, space for fridge and space for tumble dryer below. Picture rail. Tiled floor. Secondary glazed window to side.

Kitchen 12'5" excluding door recess x 9'11" (3.78m excluding door recess x 3.02m)



Enamel sink unit with mixer tap and cupboard below. Further drawer and base units with work surfaces over and incorporating four ring ceramic hob with electric oven below and cooker hood above. Wall units. Cupboard housing gas boiler. Larder cupboard with shelving and window to front. Tiling to walls. Tiled floor. Secondary glazed window to front. Glazed door to:

Side Porch

Store cupboard. Space for fridge freezer. Door to side garden.

Stairs, rising from entrance hall, to:

First Floor Landing



Walk-in cupboard with shelving. Radiator. Hatch to loft.

Bedroom 1 15'5" x 11'5" (4.70m x 3.48m)



Picture rail. Radiator. Two secondary glazed windows to front.

Bedroom 2 13'2" max x 12'6" (4.01m max x 3.81m)



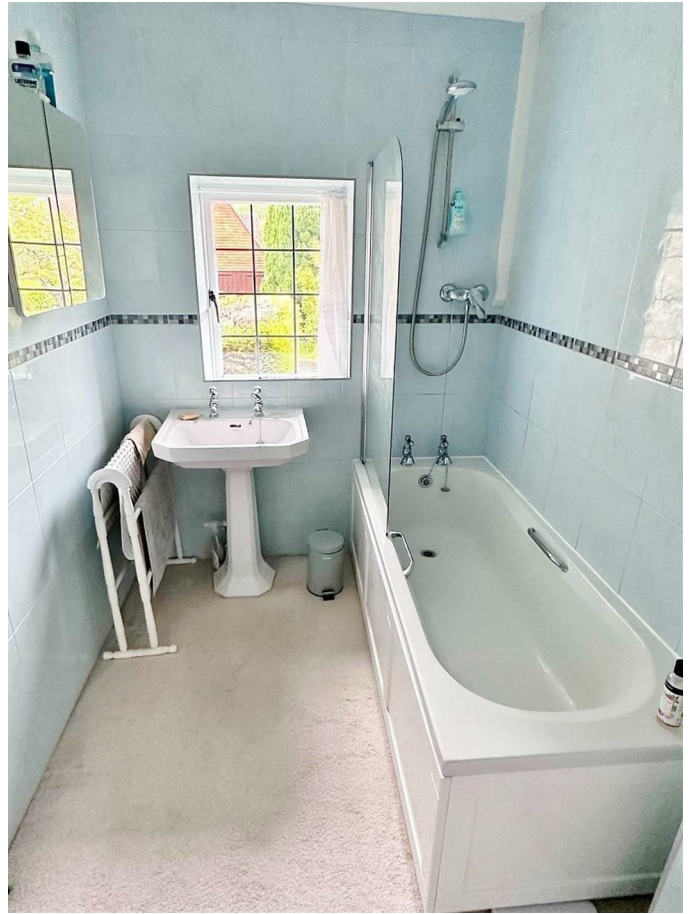
Built-in wardrobe cupboard. Radiator. Secondary glazed window to side. Secondary glazed window to front with far reaching views.

Bedroom 3 11'5" x 6'5" (3.48m x 1.96m)



Radiator. Secondary glazed window to side.

Bathroom



Bath with wall mounted shower unit. Glazed shower screen. Wash basin. Radiator. Tiled walls. Inset ceiling spotlights. Window to side.

Cloakroom

Low level WC. Tiled walls. Window to side.

Outside



There is a delightful lawned garden to the front, enclosed by brick wall. Gate to front and side. There is a garden to the side of the property and a driveway for off street parking. There is also a delightful communal garden to the rear.

Other Information

Council Tax Band E

The Vendor has advised us of the following information:

The charge to maintain the communal garden areas and provide insurance, tree maintenance etc for the immediate area is £350.00 per annum

Floor Plan

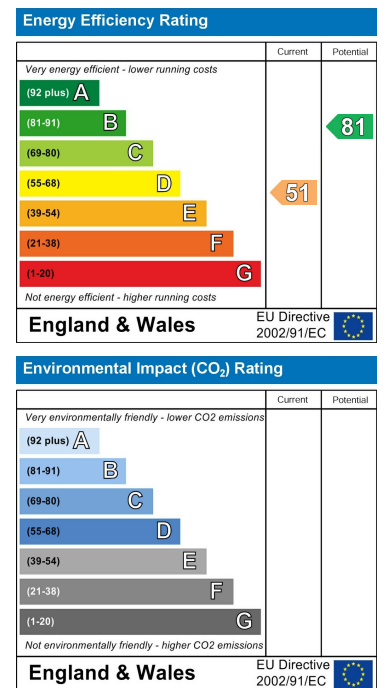


Whilst every attempt has been made to ensure the accuracy of the floor plan contained here, measurements of doors, windows, rooms and any other items are approximate and no responsibility is taken for any error, omission or misstatement. This plan is for illustrative purposes only and should be used as such by any prospective purchaser. Plan produced using PlanUp.

Area Map



Energy Efficiency Graph



These particulars, whilst believed to be accurate are set out as a general outline only for guidance and do not constitute any part of an offer or contract. Intending purchasers should not rely on them as statements of representation of fact, but must satisfy themselves by inspection or otherwise as to their accuracy. No person in this firm's employment has the authority to make or give any representation or warranty in respect of the property.