



78 Shenley Road, Borehamwood,  
WD6 1EH  
bwsales@barkersestateagents.com  
barkersestateagents.com

**BARKERS**  
ESTATE & LETTING AGENTS  
020 8953 4556

## 1 Shenley Road, Borehamwood



PROPERTIES ARE NOW FULLY COMPLETED AND READY TO VIEW!!! - The Crown Apartments are a selection of 9, 1 and 2 bedroom flats in this Historic building previously known as "The Crown". The building dates back to the early 1900's. Situated in one of the most prominent sites in Borehamwood Town Centre opposite the Elstree and Borehamwood train station. The site is registered under the Government's HELP TO BUY Scheme. Crown. Call Barkers of Borehamwood 0208 953 4556:

- Fully tiled bathrooms/showers
- Open plan kitchen and lounge
- Carpeted Bedrooms
- Quality Wooden floors
- Fully Integrated Kitchen
- LED Lighting
- CRL 10-year build warranty
- HELP TO BUY Scheme

**Leasehold Price £365,000**

#### Accommodation Schedule

Fully tiled bathrooms with showers and under floor heating.  
Open plan modern high gloss kitchens with soft close doors and drawers with integrated branded appliances.  
Bedrooms carpeted.  
Wooden floors.  
Double Glazed.  
LED low voltage ceiling lighting.  
CRL 10-year build warranty.  
Cycle store.  
Gas central heating.  
HELP TO BUY Government Assistance

#### Location

The building is situated at the junction of Shenley Road and Theobald Street being immediately opposite Borehamwood and Elstree main line station, being ideally located for commuting to Kings Cross/St Pancras/Euston and Central London. Within walking distance is an array of shopping, restaurants, cafes. As well as the very popular and established Boulevard Shopping Park.

#### Flat 2

First Floor - 74 Sqm - 796 Sqft

#### Hallway



#### Lounge/Diner/Kitchen 21'10 x 15'10 (6.65m x 4.83m)



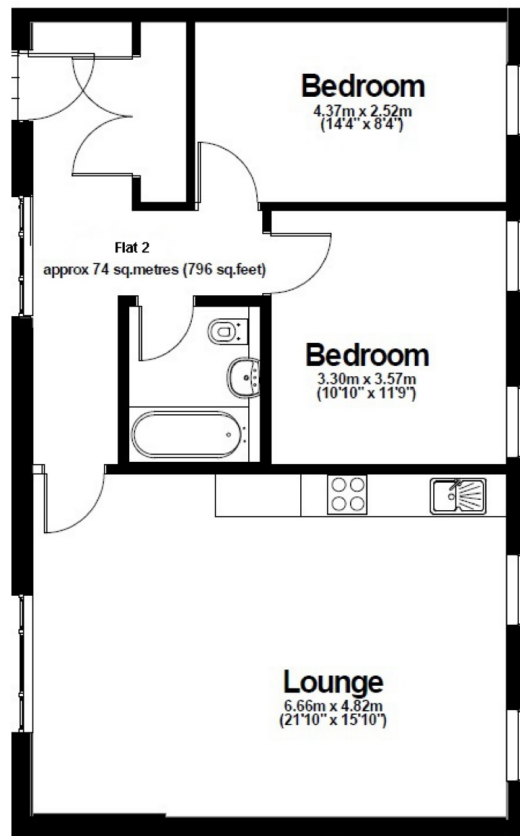
#### Master Bedroom 14'4 x 8'4 (4.37m x 2.54m)

Photos advertised are for Apartment 1 (Show Flat)



#### Bedroom Two 10'10 x 11'9 (3.30m x 3.58m)













Barkers have prepared these property sale particulars as accurately and reliably as possible. However, we are human and occasionally errors occur! Whilst we believe them to be correct they are offered only as a general guide and do not constitute any part of an offer or contract. Intending purchasers should not rely on them as statements of representation of fact, but should satisfy themselves by inspection or otherwise as to their accuracy. Any points of concern arising from them should be clarified with this office before travelling any distance to view the property. All measurements and descriptions are approximate and must not be relied upon for the purpose of ordering carpets, furnishings, fittings, appliances or services. No person employed by Barkers has authority to make or give any representation or warranty whatsoever in respect of this property. Floorplans are NOT TO SCALE. Floorplans are included as a service to applicants to give only a visual impression of the accommodation. It is intended only as a GUIDE TO THE LAYOUT. Dimensions and positions of walls, doors, windows, stairs etc., are approximate.

**CALL BARKERS TO ARRANGE  
A VIEWING  
020 8953 4556**

